

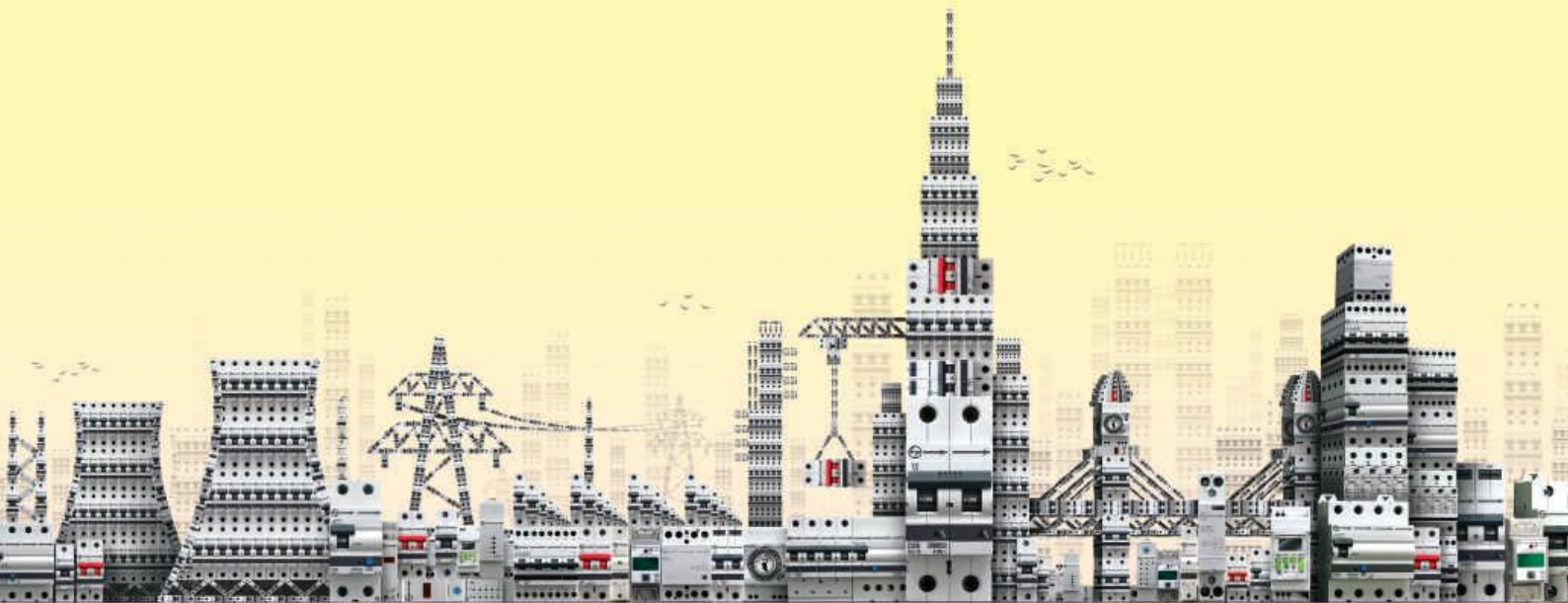


WINNER OF
DEMING PRIZE
2019

Engineered for the **real world**

**AU Solutions
for Final Distribution**

Protection | Control | Monitoring



Maximum Retail Prices
Effective from 01-11-2019

 **L&T Electrical & Automation**

A brand of Larsen & Toubro Limited

A comprehensive range for **real world** applications



Real-world applications are varied and spread across segments and geographies.

We, at L&T, are aware that final distribution products are needed for a diverse range of applications – from residential buildings to industrial installations.

Presenting the range that meets all your needs – AU Solutions for Final Distribution!

**Manufactured at L&T's state-of-the art
facility at Ahmednagar, Maharashtra**





Protection

- MCBs
- RCCBs
- RCBOs
- SPDs

Monitoring

- Accessories
- Energy Meters
- Indicating Lights

Control

- Isolators
- Modular Contactors
- Changeover Switches
- Time Switches

AU-COM



Note:

Colour of HSN code signifies below
[Green colour : 18%* GST]

*Subject to change as per Govt. notification

Translating technology into **real** benefits



AU Solutions for final distribution offer a unique blend of safety, convenience and performance. Each product in the AU Solutions range is designed to provide lasting benefits.

Lowest Watt Loss Saves money and natural resources

MCBs from AU Solutions offer the lowest watt loss in the industry. On an average, the watt loss values are almost 55% lower than those prescribed by IEC.

Lower watt loss means lower power consumption, which directly translates into monetary savings. Beyond tangible benefits, lower power requirement also hints at lower consumption of natural resources used for producing energy. In a nutshell, these MCBs are a small, yet significant step towards sustainability.

Maximum Power Loss Per Pole (W)

| Current Ratings (A) | As Per IS/IEC 60898 | For AU Range of MCBs | % lower |
|---------------------|---------------------|----------------------|---------|
| 0.5 | 3 | 1.9 | 38% |
| 1 | 3 | 2 | 33% |
| 1.6 | 3 | 2.1 | 30% |
| 2 | 3 | 2.1 | 30% |
| 3 | 3 | 2.1 | 30% |
| 4 | 3 | 2.1 | 30% |
| 5 | 3 | 2.1 | 30% |
| 6 | 3 | 1.1 | 63% |
| 10 | 3 | 1.2 | 60% |
| 16 | 3.5 | 1.8 | 50% |
| 20 | 4.5 | 1.9 | 58% |
| 25 | 4.5 | 2.1 | 54% |
| 32 | 6 | 2.4 | 60% |
| 40 | 7.5 | 3.1 | 59% |
| 50 | 9 | 4.1 | 54% |
| 63 | 13 | 4.3 | 67% |
| 80 | 15 | 3.9 | 74% |
| 100 | 15 | 6.2 | 59% |
| 125 | 20 | 9.2 | 54% |



Greater Savings



Towards Sustainability



For reducing extra gases



For driving extra miles



For electrifying extra houses



Short-circuit Fault Indicator

Easy diagnosis, saves downtime

With the unique short-circuit fault indication feature, one can conclude if the MCB has tripped due to a short-circuit fault.

It helps in reducing downtime as the faulty phase and cause of MCB tripping are easily detected.

If the MCB has tripped on 'overload', non-critical loads can be switched off before switching the MCB on again.

In the case of a short-circuit fault, the location and cause of the short-circuit should be identified and the necessary corrective action should be taken.



Quick Connect

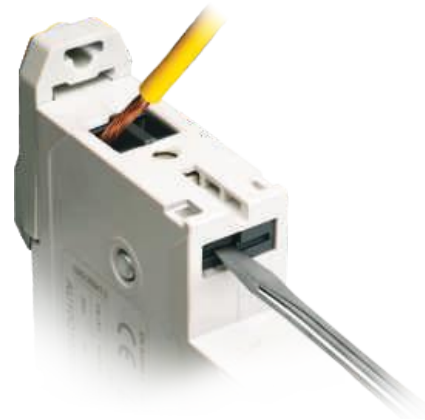
Saves time

Quick Connect MCBs offer spring-loaded terminals as against conventional termination.

Both flexible and rigid wires can be terminated by sliding them along the termination groove; no tool is required for terminating the rigid wire.

Quick Connect MCBs can be terminated in a mere 1-2 seconds* as against 10-15 seconds required for standard MCBs.

With Quick Connect MCBs, the installer can achieve a reduction in installation time by around 30%, increasing overall productivity.



Communication Capability

For smart systems

With the communication capability of AU Solutions, one can monitor and control various devices remotely.

The complete communication system can be deployed for effective energy management.



RoHS Compliance

Environment-friendly

RoHS compliant AU Solutions do not use any substances which are hazardous to the environment.



*Quick Connect section with rigid wire

MCBs (Miniature Circuit Breakers) [8536]

Range Highlights

- Conforms to IS/IEC 60898-1, EN 60898-1, IEC 60898-1, EN 60947-2, IEC 60947-2

- Wide Range of Current Ratings – 0.5A to 125A

- Short circuit Breaking Capacity

10kA (IEC 60898-1, EN 60898-1)

15kA (IEC 60947-2, EN 60947-2) - for 80A, 100A and 125A

- B, C & D Characteristics

- Available in SP, DP, TP, FP, SPN and TPN

- Suitable for DC Application

- Suitable for Isolation

- Protection Degree - IP 20

- Availability of wide Range of Site Mountable Accessories

Standard Version AU-10 | 10kA as per IS/IEC 60898-1



| Rating | Module | B Curve CAT Nos. | M.R.P. (₹) Per Unit | C Curve CAT Nos. | M.R.P. (₹) Per Unit | D Curve CAT Nos. | M.R.P. (₹) Per Unit |
|--------------------|--------|---------------------|---------------------------|---------------------|---------------------------|---------------------|---------------------------|
| Single Pole | | | | | | | |
| 0.5A | 1 | - | - | AU10S10E53C | 385 | AU10S10E53D | 385 |
| 1A | 1 | - | - | AU10S10013C | 385 | AU10S10013D | 385 |
| 1.6A | 1 | - | - | AU10S11E63C | 385 | AU10S11E63D | 385 |
| 2A | 1 | - | - | AU10S10023C | 385 | AU10S10023D | 385 |
| 3A | 1 | - | - | AU10S10033C | 385 | AU10S10033D | 385 |
| 4A | 1 | - | - | AU10S10043C | 385 | AU10S10043D | 385 |
| 5A | 1 | - | - | AU10S10053C | 385 | AU10S10053D | 385 |
| 6A | 1 | AU10S10063B | 258 | AU10S10063C | 258 | AU10S10063D | 325 |
| 10A | 1 | AU10S10103B | 258 | AU10S10103C | 258 | AU10S10103D | 325 |
| 16A | 1 | AU10S10163B | 258 | AU10S10163C | 258 | AU10S10163D | 325 |
| 20A | 1 | AU10S10203B | 258 | AU10S10203C | 258 | AU10S10203D | 325 |
| 25A | 1 | AU10S10253B | 258 | AU10S10253C | 258 | AU10S10253D | 325 |
| 32A | 1 | AU10S10323B | 258 | AU10S10323C | 258 | AU10S10323D | 325 |
| 40A | 1 | AU10S10403B | 550 | AU10S10403C | 550 | AU10S10403D | 580 |
| 50A | 1 | AU10S10503B | 550 | AU10S10503C | 550 | AU10S10503D | 580 |
| 63A | 1 | AU10S10633B | 550 | AU10S10633C | 550 | AU10S10633D | 580 |
| Two Pole | | | | | | | |
| 0.5A | 2 | - | - | AU10S20E53C | 1040 | AU10S20E53D | 1040 |
| 1A | 2 | - | - | AU10S20013C | 1040 | AU10S20013D | 1040 |
| 1.6A | 2 | - | - | AU10S21E63C | 1040 | AU10S21E63D | 1040 |
| 2A | 2 | - | - | AU10S20023C | 1040 | AU10S20023D | 1040 |
| 3A | 2 | - | - | AU10S20033C | 1040 | AU10S20033D | 1040 |
| 4A | 2 | - | - | AU10S20043C | 1040 | AU10S20043D | 1040 |
| 5A | 2 | - | - | AU10S20053C | 1040 | AU10S20053D | 1040 |
| 6A | 2 | AU10S20063B | 750 | AU10S20063C | 750 | AU10S20063D | 770 |
| 10A | 2 | AU10S20103B | 750 | AU10S20103C | 750 | AU10S20103D | 770 |
| 16A | 2 | AU10S20163B | 750 | AU10S20163C | 750 | AU10S20163D | 770 |
| 20A | 2 | AU10S20203B | 750 | AU10S20203C | 750 | AU10S20203D | 770 |
| 25A | 2 | AU10S20253B | 750 | AU10S20253C | 750 | AU10S20253D | 770 |
| 32A | 2 | AU10S20323B | 750 | AU10S20323C | 750 | AU10S20323D | 770 |
| 40A | 2 | AU10S20403B | 1205 | AU10S20403C | 1205 | AU10S20403D | 1240 |
| 50A | 2 | AU10S20503B | 1205 | AU10S20503C | 1205 | AU10S20503D | 1240 |
| 63A | 2 | AU10S20633B | 1205 | AU10S20633C | 1205 | AU10S20633D | 1240 |
| Three Pole | | | | | | | |
| 0.5A | 3 | - | - | AU10S30E53C | 1615 | AU10S30E53D | 1615 |
| 1A | 3 | - | - | AU10S30013C | 1615 | AU10S30013D | 1615 |
| 1.6A | 3 | - | - | AU10S31E63C | 1615 | AU10S31E63D | 1615 |
| 2A | 3 | - | - | AU10S30023C | 1615 | AU10S30023D | 1615 |
| 3A | 3 | - | - | AU10S30033C | 1615 | AU10S30033D | 1615 |
| 4A | 3 | - | - | AU10S30043C | 1615 | AU10S30043D | 1615 |
| 5A | 3 | - | - | AU10S30053C | 1615 | AU10S30053D | 1615 |
| 6A | 3 | AU10S30063B | 1225 | AU10S30063C | 1225 | AU10S30063D | 1265 |
| 10A | 3 | AU10S30103B | 1225 | AU10S30103C | 1225 | AU10S30103D | 1265 |
| 16A | 3 | AU10S30163B | 1225 | AU10S30163C | 1225 | AU10S30163D | 1265 |
| 20A | 3 | AU10S30203B | 1225 | AU10S30203C | 1225 | AU10S30203D | 1265 |
| 25A | 3 | AU10S30253B | 1225 | AU10S30253C | 1225 | AU10S30253D | 1265 |
| 32A | 3 | AU10S30323B | 1225 | AU10S30323C | 1225 | AU10S30323D | 1265 |
| 40A | 3 | AU10S30403B | 1870 | AU10S30403C | 1870 | AU10S30403D | 1955 |
| 50A | 3 | AU10S30503B | 1870 | AU10S30503C | 1870 | AU10S30503D | 1955 |
| 63A | 3 | AU10S30633B | 1870 | AU10S30633C | 1870 | AU10S30633D | 1955 |

Note: Standard Pack Quantity for MCB : SP - 12 Nos., DP/SPN - 6 Nos., TP - 4 Nos., FP/TPN - 3 Nos.

MCBs (Miniature Circuit Breakers) [8536]



Standard Version AU-10 | 10kA as per IS/IEC 60898-1



| Rating | Module | B Curve CAT Nos. | M.R.P. (₹) Per Unit | C Curve CAT Nos. | M.R.P. (₹) Per Unit | D Curve CAT Nos. | M.R.P. (₹) Per Unit |
|------------------|--------|---------------------|---------------------------|---------------------|---------------------------|---------------------|---------------------------|
| Four Pole | | | | | | | |
| 0.5A | 4 | - | - | AU10S40E53C | 2020 | AU10S40E53D | 2020 |
| 1A | 4 | - | - | AU10S40013C | 2020 | AU10S40013D | 2020 |
| 1.6A | 4 | - | - | AU10S41E63C | 2020 | AU10S41E63D | 2020 |
| 2A | 4 | - | - | AU10S40023C | 2020 | AU10S40023D | 2020 |
| 3A | 4 | - | - | AU10S40033C | 2020 | AU10S40033D | 2020 |
| 4A | 4 | - | - | AU10S40043C | 2020 | AU10S40043D | 2020 |
| 5A | 4 | - | - | AU10S40053C | 2020 | AU10S40053D | 2020 |
| 6A | 4 | AU10S40063B | 1650 | AU10S40063C | 1650 | AU10S40063D | 1690 |
| 10A | 4 | AU10S40103B | 1650 | AU10S40103C | 1650 | AU10S40103D | 1690 |
| 16A | 4 | AU10S40163B | 1650 | AU10S40163C | 1650 | AU10S40163D | 1690 |
| 20A | 4 | AU10S40203B | 1650 | AU10S40203C | 1650 | AU10S40203D | 1690 |
| 25A | 4 | AU10S40253B | 1650 | AU10S40253C | 1650 | AU10S40253D | 1690 |
| 32A | 4 | AU10S40323B | 1650 | AU10S40323C | 1650 | AU10S40323D | 1690 |
| 40A | 4 | AU10S40403B | 2370 | AU10S40403C | 2370 | AU10S40403D | 2435 |
| 50A | 4 | AU10S40503B | 2370 | AU10S40503C | 2370 | AU10S40503D | 2435 |
| 63A | 4 | AU10S40633B | 2370 | AU10S40633C | 2370 | AU10S40633D | 2435 |
| SPN | | | | | | | |
| 0.5A | 2 | - | - | AU10SS0E53C | 985 | AU10SS0E53D | 985 |
| 1A | 2 | - | - | AU10SS0013C | 985 | AU10SS0013D | 985 |
| 1.6A | 2 | - | - | AU10SS1E63C | 985 | AU10SS1E63D | 985 |
| 2A | 2 | - | - | AU10SS0023C | 985 | AU10SS0023D | 985 |
| 3A | 2 | - | - | AU10SS0033C | 985 | AU10SS0033D | 985 |
| 4A | 2 | - | - | AU10SS0043C | 985 | AU10SS0043D | 985 |
| 5A | 2 | - | - | AU10SS0053C | 985 | AU10SS0053D | 985 |
| 6A | 2 | AU10SS0063B | 715 | AU10SS0063C | 715 | AU10SS0063D | 735 |
| 10A | 2 | AU10SS0103B | 715 | AU10SS0103C | 715 | AU10SS0103D | 735 |
| 16A | 2 | AU10SS0163B | 715 | AU10SS0163C | 715 | AU10SS0163D | 735 |
| 20A | 2 | AU10SS0203B | 715 | AU10SS0203C | 715 | AU10SS0203D | 735 |
| 25A | 2 | AU10SS0253B | 715 | AU10SS0253C | 715 | AU10SS0253D | 735 |
| 32A | 2 | AU10SS0323B | 715 | AU10SS0323C | 715 | AU10SS0323D | 735 |
| 40A | 2 | AU10SS0403B | 1150 | AU10SS0403C | 1150 | AU10SS0403D | 1180 |
| 50A | 2 | AU10SS0503B | 1150 | AU10SS0503C | 1150 | AU10SS0503D | 1180 |
| 63A | 2 | AU10SS0633B | 1150 | AU10SS0633C | 1150 | AU10SS0633D | 1180 |
| TPN | | | | | | | |
| 0.5A | 4 | - | - | AU10ST0E53C | 1915 | AU10ST0E53D | 1915 |
| 1A | 4 | - | - | AU10ST0013C | 1915 | AU10ST0013D | 1915 |
| 1.6A | 4 | - | - | AU10ST1E63C | 1915 | AU10ST1E63D | 1915 |
| 2A | 4 | - | - | AU10ST0023C | 1915 | AU10ST0023D | 1915 |
| 3A | 4 | - | - | AU10ST0033C | 1915 | AU10ST0033D | 1915 |
| 4A | 4 | - | - | AU10ST0043C | 1915 | AU10ST0043D | 1915 |
| 5A | 4 | - | - | AU10ST0053C | 1915 | AU10ST0053D | 1915 |
| 6A | 4 | AU10ST0063B | 1570 | AU10ST0063C | 1570 | AU10ST0063D | 1610 |
| 10A | 4 | AU10ST0103B | 1570 | AU10ST0103C | 1570 | AU10ST0103D | 1610 |
| 16A | 4 | AU10ST0163B | 1570 | AU10ST0163C | 1570 | AU10ST0163D | 1610 |
| 20A | 4 | AU10ST0203B | 1570 | AU10ST0203C | 1570 | AU10ST0203D | 1610 |
| 25A | 4 | AU10ST0253B | 1570 | AU10ST0253C | 1570 | AU10ST0253D | 1610 |
| 32A | 4 | AU10ST0323B | 1570 | AU10ST0323C | 1570 | AU10ST0323D | 1610 |
| 40A | 4 | AU10ST0403B | 2255 | AU10ST0403C | 2255 | AU10ST0403D | 2315 |
| 50A | 4 | AU10ST0503B | 2255 | AU10ST0503C | 2255 | AU10ST0503D | 2315 |
| 63A | 4 | AU10ST0633B | 2255 | AU10ST0633C | 2255 | AU10ST0633D | 2315 |

Note: Standard Pack Quantity for MCB : SP - 12 Nos., DP/SPN - 6 Nos., TP - 4 Nos., FP/TPN - 3 Nos.

MCBs (Miniature Circuit Breakers) [8536]

Quick Connect AU-10 | 10kA as per IS/IEC 60898-1



| Rating | Module | B Curve CAT Nos. | M.R.P. (₹) Per Unit | C Curve CAT Nos. | M.R.P. (₹) Per Unit |
|--------------------|--------|---------------------|---------------------------|---------------------|---------------------------|
| Single Pole | | | | | |
| 6A | 1 | AU10Q10063B | 260 | AU10Q10063C | 260 |
| 10A | 1 | AU10Q10103B | 260 | AU10Q10103C | 260 |
| 16A | 1 | AU10Q10163B | 260 | AU10Q10163C | 260 |
| 20A | 1 | AU10Q10203B | 260 | AU10Q10203C | 260 |



| | | | | | |
|-----------------|---|-------------|-----|-------------|-----|
| Two Pole | | | | | |
| 6A | 2 | AU10Q20063B | 755 | AU10Q20063C | 755 |
| 10A | 2 | AU10Q20103B | 755 | AU10Q20103C | 755 |
| 16A | 2 | AU10Q20163B | 755 | AU10Q20163C | 755 |
| 20A | 2 | AU10Q20203B | 755 | AU10Q20203C | 755 |



| | | | | | |
|-------------------|---|-------------|------|-------------|------|
| Three Pole | | | | | |
| 6A | 3 | AU10Q30063B | 1235 | AU10Q30063C | 1235 |
| 10A | 3 | AU10Q30103B | 1235 | AU10Q30103C | 1235 |
| 16A | 3 | AU10Q30163B | 1235 | AU10Q30163C | 1235 |
| 20A | 3 | AU10Q30203B | 1235 | AU10Q30203C | 1235 |



| | | | | | |
|------------------|---|-------------|------|-------------|------|
| Four Pole | | | | | |
| 6A | 4 | AU10Q40063B | 1660 | AU10Q40063C | 1660 |
| 10A | 4 | AU10Q40103B | 1660 | AU10Q40103C | 1660 |
| 16A | 4 | AU10Q40163B | 1660 | AU10Q40163C | 1660 |
| 20A | 4 | AU10Q40203B | 1660 | AU10Q40203C | 1660 |



| | | | | | |
|------------|---|-------------|-----|-------------|-----|
| SPN | | | | | |
| 6A | 2 | AU10QS0063B | 715 | AU10QS0063C | 715 |
| 10A | 2 | AU10QS0103B | 715 | AU10QS0103C | 715 |
| 16A | 2 | AU10QS0163B | 715 | AU10QS0163C | 715 |
| 20A | 2 | AU10QS0203B | 715 | AU10QS0203C | 715 |



| | | | | | |
|------------|---|-------------|------|-------------|------|
| TPN | | | | | |
| 6A | 4 | AU10QT0063B | 1575 | AU10QT0063C | 1575 |
| 10A | 4 | AU10QT0103B | 1575 | AU10QT0103C | 1575 |
| 16A | 4 | AU10QT0163B | 1575 | AU10QT0163C | 1575 |
| 20A | 4 | AU10QT0203B | 1575 | AU10QT0203C | 1575 |

Note: Standard Pack Quantity for MCB : SP - 12 Nos., DP/SPN - 6 Nos., TP - 4 Nos., FP/TPN - 3 Nos.

High Rating MCBs AU-15 | 15kA as per IEC 60947-2



| Rating | Module | C Curve CAT Nos. | M.R.P. (₹) Per Unit | D Curve CAT Nos. | M.R.P. (₹) Per Unit |
|--------------------|--------|---------------------|---------------------------|---------------------|---------------------------|
| Single Pole | | | | | |
| 80A | 1.5 | AU15S10803C | 1975 | AU15S10803D | 2090 |
| 100A | 1.5 | AU15S11003C | 2210 | AU15S11003D | 2345 |
| 125A | 1.5 | AU15S11253C | 2380 | AU15S11253D | 2535 |



| | | | | | |
|-----------------|---|-------------|------|-------------|------|
| Two Pole | | | | | |
| 80A | 3 | AU15S20803C | 4370 | AU15S20803D | 4645 |
| 100A | 3 | AU15S21003C | 4665 | AU15S21003D | 4955 |
| 125A | 3 | AU15S21253C | 5135 | AU15S21253D | 5445 |



| | | | | | |
|-------------------|-----|-------------|------|-------------|------|
| Three Pole | | | | | |
| 80A | 4.5 | AU15S30803C | 6900 | AU15S30803D | 7325 |
| 100A | 4.5 | AU15S31003C | 7355 | AU15S31003D | 7805 |
| 125A | 4.5 | AU15S31253C | 8160 | AU15S31253D | 8655 |



| | | | | | |
|------------------|---|-------------|-------|-------------|-------|
| Four Pole | | | | | |
| 80A | 6 | AU15S40803C | 9010 | AU15S40803D | 9545 |
| 100A | 6 | AU15S41003C | 9375 | AU15S41003D | 9950 |
| 125A | 6 | AU15S41253C | 10605 | AU15S41253D | 11255 |

RCCBs (Residual Current Circuit Breakers) [8536]



Range Highlights*

- Conforms to IEC 61008-1, EN 61008-1, IS 12640-1
- Wide Range of Current Ratings - 16A to 100A
- Precise Sensitivities for variety of applications - from 10mA to 500mA
- 2P & 4P versions
- Suitable for Isolation

- Protection Degree - IP 20
- Availability of wide Range of Site Mountable Accessories
- Available in
 - Type AC : For standard AC installations
 - Type Adi : Suitable for AC + Pulsating DC (Type A) + Harmonics

Type-AC



| Rating | Sensitivity | Module | CAT Nos. | M.R.P. (₹) Per Unit |
|--------------|-------------|--------|-------------|---------------------|
| 2P AC | | | | |
| 16A | 10mA | 2 | AURAC201601 | 4655 |
| 25A | 10mA | 2 | AURAC202501 | 5055 |
| | 30mA | 2 | AURAC202503 | 2610 |
| | 100mA | 2 | AURAC202510 | 2770 |
| | 300mA | 2 | AURAC202530 | 2770 |
| | 500mA | 2 | AURAC202550 | 3380 |
| 40A | 30mA | 2 | AURAC204003 | 2985 |
| | 100mA | 2 | AURAC204010 | 3225 |
| | 300mA | 2 | AURAC204030 | 3225 |
| | 500mA | 2 | AURAC204050 | 3865 |
| 63A | 30mA | 2 | AURAC206303 | 3630 |
| | 100mA | 2 | AURAC206310 | 3795 |
| | 300mA | 2 | AURAC206330 | 3795 |
| | 500mA | 2 | AURAC206350 | 4080 |
| 80A | 30mA | 2 | AURAC208003 | 5920 |
| | 100mA | 2 | AURAC208010 | 5965 |
| | 300mA | 2 | AURAC208030 | 5965 |
| 100A | 30mA | 2 | AURAC210003 | 6465 |
| | 100mA | 2 | AURAC210010 | 6515 |
| | 300mA | 2 | AURAC210030 | 6515 |



| Rating | Sensitivity | Module | CAT Nos. | M.R.P. (₹) Per Unit |
|--------------|-------------|--------|-------------|---------------------|
| 4P AC | | | | |
| 25A | 30mA | 4 | AURAC402503 | 3485 |
| | 100mA | 4 | AURAC402510 | 3695 |
| | 300mA | 4 | AURAC402530 | 3695 |
| | 500mA | 4 | AURAC402550 | 4440 |
| 40A | 30mA | 4 | AURAC404003 | 3515 |
| | 100mA | 4 | AURAC404010 | 3750 |
| | 300mA | 4 | AURAC404030 | 3750 |
| | 500mA | 4 | AURAC404050 | 4505 |
| 63A | 30mA | 4 | AURAC406303 | 4030 |
| | 100mA | 4 | AURAC406310 | 4295 |
| | 300mA | 4 | AURAC406330 | 4295 |
| | 500mA | 4 | AURAC406350 | 4600 |
| 80A | 30mA | 4 | AURAC408003 | 6945 |
| | 100mA | 4 | AURAC408010 | 7005 |
| | 300mA | 4 | AURAC408030 | 7005 |
| | 500mA | 4 | AURAC408050 | 7440 |
| 100A | 30mA | 4 | AURAC410003 | 7465 |
| | 100mA | 4 | AURAC410010 | 7520 |
| | 300mA | 4 | AURAC410030 | 7520 |
| | 500mA | 4 | AURAC410050 | 7970 |

Type-Adi



| Rating | Sensitivity | Module | CAT Nos. | M.R.P. (₹) Per Unit |
|---------------|-------------|--------|-------------|---------------------|
| 2P Adi | | | | |
| 25A | 30mA | 2 | AURAD202503 | 3935 |
| | 100mA | 2 | AURAD202510 | 4115 |
| | 300mA | 2 | AURAD202530 | 4115 |
| 40A | 30mA | 2 | AURAD204003 | 4180 |
| | 100mA | 2 | AURAD204010 | 4245 |
| | 300mA | 2 | AURAD204030 | 4245 |
| 63A | 30mA | 2 | AURAD206303 | 4880 |
| | 100mA | 2 | AURAD206310 | 4975 |
| | 300mA | 2 | AURAD206330 | 4975 |
| 100A | 30mA | 2 | AURAD210003 | 7215 |



| Rating | Sensitivity | Module | CAT Nos. | M.R.P. (₹) Per Unit |
|---------------|-------------|--------|-------------|---------------------|
| 4P Adi | | | | |
| 25A | 30mA | 4 | AURAD402503 | 4755 |
| | 100mA | 4 | AURAD402510 | 4850 |
| | 300mA | 4 | AURAD402530 | 4850 |
| 40A | 30mA | 4 | AURAD404003 | 4935 |
| | 100mA | 4 | AURAD404010 | 5020 |
| | 300mA | 4 | AURAD404030 | 5020 |
| 63A | 30mA | 4 | AURAD406303 | 5375 |
| | 100mA | 4 | AURAD406310 | 5485 |
| | 300mA | 4 | AURAD406330 | 5485 |
| 100A | 30mA | 4 | AURAD410003 | 8565 |
| | 300mA | 4 | AURAD410030 | 8565 |

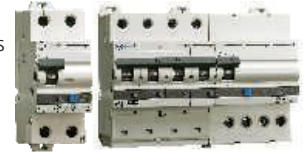
* For technical details, please contact L&T branch office

RCBOs (Residual Current Breaker with Overcurrent Protection) [8536]

Range Highlights*

- Conforms to IEC 61009-1, IS 12640-2, EN 61009-1
- Short circuit Breaking Capacity - 10kA
- Precise Sensitivities for a variety of applications - from 10mA to 300mA
- Suitable for Isolation
- Availability of wide Range of Site Mountable Accessories

- Available in
 - Type AC : For standard AC installations
 - Type Adi : Suitable for AC + Pulsating DC (Type A) + Harmonics



Type-AC

| Rating | Sensitivity | Module | CAT Nos. | M.R.P. (₹) Per Unit |
|--------------|-------------|--------|-------------|---------------------|
| 2P AC | | | | |
| 6A | 10mA | 2 | AUF3C200601 | 3735 |
| | 30mA | 2 | AUF3C200603 | 3735 |
| | 100mA | 2 | AUF3C200610 | 3815 |
| | 300mA | 2 | AUF3C200630 | 3855 |
| 10A | 10mA | 2 | AUF3C201001 | 3735 |
| | 30mA | 2 | AUF3C201003 | 3735 |
| | 100mA | 2 | AUF3C201010 | 3815 |
| | 300mA | 2 | AUF3C201030 | 3855 |
| 16A | 10mA | 2 | AUF3C201601 | 3735 |
| | 30mA | 2 | AUF3C201603 | 3735 |
| | 100mA | 2 | AUF3C201610 | 3815 |
| | 300mA | 2 | AUF3C201630 | 3855 |
| 20A | 30mA | 2 | AUF3C202003 | 3735 |
| | 100mA | 2 | AUF3C202010 | 3815 |
| | 300mA | 2 | AUF3C202030 | 3855 |
| 25A | 30mA | 2 | AUF3C202503 | 3735 |
| | 100mA | 2 | AUF3C202510 | 3815 |
| | 300mA | 2 | AUF3C202530 | 3855 |
| 32A | 30mA | 2 | AUF3C203203 | 3735 |
| | 100mA | 2 | AUF3C203210 | 3815 |
| | 300mA | 2 | AUF3C203230 | 3855 |
| 40A | 30mA | 2 | AUF3C204003 | 3735 |
| | 100mA | 2 | AUF3C204010 | 3815 |
| | 300mA | 2 | AUF3C204030 | 3855 |
| 63A | 30mA | 4 | AUF3C206303 | 4790 |
| | 100mA | 4 | AUF3C206310 | 5075 |
| | 300mA | 4 | AUF3C206330 | 5115 |
| 4P AC | | | | |
| 16A | 30mA | 7.5 | AUF3C401603 | 4330 |
| | 100mA | 7.5 | AUF3C401610 | 4815 |
| | 300mA | 7.5 | AUF3C401630 | 4915 |
| 20A | 30mA | 7.5 | AUF3C402003 | 4330 |
| | 100mA | 7.5 | AUF3C402010 | 4815 |
| | 300mA | 7.5 | AUF3C402030 | 4915 |
| 25A | 30mA | 7.5 | AUF3C402503 | 4330 |
| | 100mA | 7.5 | AUF3C402510 | 4815 |
| | 300mA | 7.5 | AUF3C402530 | 4915 |
| 32A | 30mA | 7.5 | AUF3C403203 | 4470 |
| | 100mA | 7.5 | AUF3C403210 | 4820 |
| | 300mA | 7.5 | AUF3C403230 | 4925 |
| 40A | 30mA | 7.5 | AUF3C404003 | 4535 |
| | 100mA | 7.5 | AUF3C404010 | 4820 |
| | 300mA | 7.5 | AUF3C404030 | 4940 |
| 63A | 30mA | 7.5 | AUF3C406303 | 5440 |
| | 100mA | 7.5 | AUF3C406310 | 5545 |
| | 300mA | 7.5 | AUF3C406330 | 5545 |
| 80A | 30mA | 12 | AUF3C408003 | 19435 |
| | 100mA | 12 | AUF3C408010 | 19870 |
| | 300mA | 12 | AUF3C408030 | 19870 |
| 100A | 30mA | 12 | AUF3C410003 | 20780 |
| | 100mA | 12 | AUF3C410010 | 21275 |
| | 300mA | 12 | AUF3C410030 | 21275 |

Type-Adi

| Rating | Sensitivity | Module | CAT Nos. | M.R.P. (₹) Per Unit |
|---------------|-------------|--------|-------------|---------------------|
| 2P Adi | | | | |
| 6A | 30mA | 2 | AUF3D200603 | 4845 |
| | 100mA | 2 | AUF3D200610 | 5335 |
| | 300mA | 2 | AUF3D200630 | 5535 |
| 10A | 30mA | 2 | AUF3D201003 | 4845 |
| | 100mA | 2 | AUF3D201010 | 5335 |
| | 300mA | 2 | AUF3D201030 | 5535 |
| 16A | 30mA | 2 | AUF3D201603 | 4845 |
| | 100mA | 2 | AUF3D201610 | 5335 |
| | 300mA | 2 | AUF3D201630 | 5535 |
| 20A | 30mA | 2 | AUF3D202003 | 4845 |
| | 100mA | 2 | AUF3D202010 | 5335 |
| | 300mA | 2 | AUF3D202030 | 5535 |
| 25A | 30mA | 2 | AUF3D202503 | 4845 |
| | 100mA | 2 | AUF3D202510 | 5335 |
| | 300mA | 2 | AUF3D202530 | 5535 |
| 32A | 30mA | 2 | AUF3D203203 | 4845 |
| | 100mA | 2 | AUF3D203210 | 5335 |
| | 300mA | 2 | AUF3D203230 | 5535 |
| 40A | 30mA | 2 | AUF3D204003 | 4845 |
| | 100mA | 2 | AUF3D204010 | 5335 |
| | 300mA | 2 | AUF3D204030 | 5535 |
| 63A | 30mA | 4 | AUF3D206303 | 6020 |
| | 100mA | 4 | AUF3D206310 | 6370 |
| | 300mA | 4 | AUF3D206330 | 6420 |
| 4P Adi | | | | |
| 16A | 30mA | 7.5 | AUF3D401603 | 5440 |
| | 100mA | 7.5 | AUF3D401610 | 6050 |
| | 300mA | 7.5 | AUF3D401630 | 6175 |
| 20A | 30mA | 7.5 | AUF3D402003 | 5440 |
| | 100mA | 7.5 | AUF3D402010 | 6050 |
| | 300mA | 7.5 | AUF3D402030 | 6175 |
| 25A | 30mA | 7.5 | AUF3D402503 | 5440 |
| | 100mA | 7.5 | AUF3D402510 | 6050 |
| | 300mA | 7.5 | AUF3D402530 | 6175 |
| 32A | 30mA | 7.5 | AUF3D403203 | 5615 |
| | 100mA | 7.5 | AUF3D403210 | 6055 |
| | 300mA | 7.5 | AUF3D403230 | 6185 |
| 40A | 30mA | 7.5 | AUF3D404003 | 5700 |
| | 100mA | 7.5 | AUF3D404010 | 6055 |
| | 300mA | 7.5 | AUF3D404030 | 6205 |
| 63A | 30mA | 7.5 | AUF3D406303 | 6830 |
| | 100mA | 7.5 | AUF3D406310 | 6965 |
| | 300mA | 7.5 | AUF3D406330 | 6965 |
| 80A | 30mA | 12 | AUF3D408003 | 19435 |
| | 100mA | 12 | AUF3D408010 | 19870 |
| | 300mA | 12 | AUF3D408030 | 19870 |
| 100A | 30mA | 12 | AUF3D410003 | 20780 |
| | 100mA | 12 | AUF3D410010 | 21275 |
| | 300mA | 12 | AUF3D410030 | 21275 |

* For technical details, please contact L&T branch office

Indicating Lights [8531]



| Description | Module | CAT Nos. | M.R.P. (₹) Per Unit |
|-------------|--------|-----------------|---------------------|
| AUIL01RED00 | 1 | RED | 830 |
| AUIL01YEL00 | 1 | YELLOW | 830 |
| AUIL01BLU00 | 1 | BLUE | 830 |
| AUIL01GRE00 | 1 | GREEN | 830 |
| AUIL01RYB00 | 1 | RED-YELLOW-BLUE | 1005 |

SPDs (Surge Protection Devices) [8536]

Range Highlights

- Conforms to IEC 61643-11
- Available in Type 2 and Type 1+2
- Type 2 : Protection against indirect lightning and switching surges
 - Maximum Discharge Current - I_{max} up to 70kA
- Type 1+2 : Protection against direct and indirect lightning surges
 - Maximum Discharge Current - I_{max} up to 100kA



| Description | Configuration | Module | CAT Nos. | M.R.P. (₹) Per Unit |
|----------------------------------|---------------|--------|--------------|---------------------|
| Type 1+2, I _{max} 50kA | 1P+N | 2 | AUSP121PN50 | 6480 |
| | 3P+N | 4 | AUSP123PN50 | 12720 |
| Type 2, I _{max} 40kA | 1P+N | 1 | AUSP021PN40 | 4500 |
| | 3P+N | 2 | AUSP023PN40 | 9000 |
| Type 2, I _{max} 15kA | 1P+N | 1 | AUSP021PN15 | 3600 |
| | 3P+N | 2 | AUSP023PN15 | 7080 |
| Type 1+2, I _{max} 100kA | 1P+N | 2 | AUSP121PN100 | 7200 |
| | 3P+N | 4 | AUSP123PN100 | 13200 |
| Type 2, I _{max} 70kA | 1P+N | 2 | AUSP021PN70 | 7200 |
| | 3P+N | 4 | AUSP023PN70 | 12000 |

Extend SPD life with Spare Cartridges



| Description | CAT Nos. | M.R.P. (₹) Per Unit |
|---|--------------|---------------------|
| Cartridge for AUSP021PN15 | AUSC021PN15 | 1800 |
| Cartridge for AUSP021PN40 | AUSC021PN40 | 2250 |
| Cartridge for AUSP021PN70 / AUSP023PN70 | AUSC021PN70 | 2400 |
| Cartridge for AUSP023PN15 | AUSC023PN15 | 2360 |
| Cartridge for AUSP023PN40 | AUSC023PN40 | 3000 |
| Cartridge for AUSP121PN100 / AUSP123PN100 | AUSC121PN100 | 3600 |
| Cartridge for AUSP121PN50 / AUSP123PN50 | AUSC121PN50 | 3455 |

Accessories [8538]

Range Highlights

- Standard Compliance
 - Undervoltage Release - IEC 60947-1
 - Shunt Release - IEC 60947-1
- Protection Degree - IP 20
- Auxiliary Contact (AU-AX) & Selectable Auxiliary/Trip Alarm Contact (AU-AT) are offered in Half Module
- Undervoltage (AU-UV), Overvoltage (AU-OV) and Shunt Release (AU-SR) are offered in One Module
- All Half Module and One Module Accessories are common for MCBs and RCDs
- Padlock is offered in two versions
 - AUPD 01 – suitable for 1Pole = 1Module Devices
 - AUPD 02 – suitable for 1Pole = 1.5 Module Devices



| Description | Configuration | Module | Voltage | CAT Nos. | M.R.P. (₹) Per Unit |
|--|---|--------|-----------------|-----------|---------------------|
| Auxiliary Contact | 1NO+1NC | 0.5 | 240V AC, 24V DC | AUAXAC240 | 750 |
| AUX/TAC* | 1NO+1NC | 0.5 | 240V AC, 24V DC | AUATAC240 | 880 |
| Undervoltage Release | - | 1 | 240V AC | AUUVAC240 | 1780 |
| | - | 1 | 24V DC | AUUVDC024 | 1780 |
| Overvoltage Release | - | 1 | 240V AC | AUOVAC240 | 2200 |
| Shunt Release | - | 1 | 240V AC | AUSRAC240 | 2045 |
| | - | 1 | 24V DC | AUSRDC024 | 2045 |
| Padlock-Suitable for Lock Hasp 3.5 - 5 mm dia. max | Suitable for 1Pole=1Mod devices: MCBs up to 63A, RCCBs, RCBOs, Isolators, Changeover Switches up to 40A | | | AUPD01 | 405 |
| | Suitable for 1Pole-1.5Mod devices: MCBs 80A-125A, Changeover Switch 63A | | | AUPD02 | 455 |

Note: Standard Pack Quantity for Padlock - 2Nos. * For 80A-125A MCBs please contact nearest L&T branch

Energy Meters [9030]

Range Highlights

- Communication with additional RS485 & WiFi module
- Class 1 accuracy
- Direct current operated meter
- Reverse current indication for three-phase meter



| Description | Module | CAT Nos. | M.R.P. (₹) Per Unit |
|--------------|--------|--------------|---------------------|
| Single Phase | 2 | WD4000101000 | 2035 |
| Three Phase | 7 | WD4000103000 | 4620 |

Isolators [8536]

Range Highlights

- Suitable for Isolation as per IEC 60947-3, IS/IEC 60947-3 – providing operational safety at the downstream
- Comprehensive range suitable for various applications
- Utilization Category of AC-22A
- Suitability for Mounting Auxiliary Contact



| Rating | Module | CAT Nos. | M.R.P. (₹) Per Unit |
|--------------------|--------|-------------|---------------------|
| Double Pole | | | |
| 25A | 2 | AUI00202500 | 385 |
| 32A | 2 | AUI00203200 | 420 |
| 40A | 2 | AUI00204000 | 465 |
| 63A | 2 | AUI00206300 | 605 |
| 80A | 2 | AUI00208000 | 725 |
| 100A | 2 | AUI00210000 | 825 |
| 125A | 2 | AUI00212500 | 940 |
| Three Pole | | | |
| 32A | 3 | AUI00303200 | 745 |
| 40A | 3 | AUI00304000 | 795 |
| 63A | 3 | AUI00306300 | 940 |
| 80A | 3 | AUI00308000 | 1010 |
| 100A | 3 | AUI00310000 | 1055 |
| 125A | 3 | AUI00312500 | 1215 |
| Four Pole | | | |
| 32A | 4 | AUI00403200 | 825 |
| 40A | 4 | AUI00404000 | 1025 |
| 63A | 4 | AUI00406300 | 1120 |
| 80A | 4 | AUI00408000 | 1235 |
| 100A | 4 | AUI00410000 | 1365 |
| 125A | 4 | AUI00412500 | 1505 |

Changeover Switches [8536]

Range Highlights

- Conforms to IEC 60947-3 and IS/IEC 60947-3
- Available in 3 positions (I-O-II) with centre off position
- Utilization category AC-22A



| Rating | Module | CAT Nos. | M.R.P. (₹) Per Unit |
|--------------------|--------|-------------|---------------------|
| Double Pole | | | |
| 25A | 2 | AUC00202500 | 1405 |
| 40A | 2 | AUC00204000 | 2155 |
| 63A | 3 | AUC00206300 | 2505 |
| Four Pole | | | |
| 40A | 4 | AUC00404000 | 3710 |
| 63A | 6 | AUC00406300 | 4210 |

Time Switches [9107]



| Description | Module | CAT Nos. | M.R.P. (₹) Per Unit |
|---------------------|--------|-------------|---------------------|
| Analog time switch | 1 | AUTS01ANA00 | 3750 |
| Analog time switch | 3 | AUTS03ANA00 | 4560 |
| Digital time switch | 2 | AUTS02DIG00 | 2955 |
| Astro time switch | 2 | AUTS02AST00 | 4965 |

Modular Contactors [8536]



Range Highlights

- Wide Range of Current Ratings:
 - 25A, 40A and 63A
- Conforms to:
 - IEC 61095, EN 61095
 - IEC 60497-4-1, EN 60497-4-1
 - IEC 60497-5-1
- Available in:
 - 1NO, 2NO, 3NO, 4NO and 2NO+2NC version
- Protection Degree IP 20



| Description (AC-1) | Module | CAT Nos. | M.R.P. (₹) Per Unit |
|-------------------------|--------|-------------|---------------------|
| 25A-1NO | 1 | AUMC1002501 | 1345 |
| 25A-2NO | 1 | AUMC2002501 | 1680 |
| 40A-2NO | 3 | AUMC2004003 | 2885 |
| 40A-3NO | 3 | AUMC3004003 | 4130 |
| 40A-4NO | 3 | AUMC4004003 | 4850 |
| 63A-2NO+2NC | 3 | AUMC2206303 | 5125 |
| 63A-3NO | 3 | AUMC3006303 | 5250 |
| 63A-4NO | 3 | AUMC4006303 | 5775 |
| Accessory [8538] | | | |
| Auxiliary Contact, 2NO | 0.5 | AUMCAUX240 | 1625 |

Single Phase -ACCL [8536]

Automatic Changeover with Current Limiter

- Conforms to IEC 60947-6, IEC 60947-3
- Wide Range of Current Ratings
 - (Generator side) - 1.5A to 30A
 - (Electricity Board side) - 30A
- RoHS compliant



| Description | Module | Cat. Nos. | M.R.P. (₹) Per Unit |
|-------------|--------|---------------|---------------------|
| 30A/1.5A | 4 | AUCL010301E5 | 1985 |
| 30A/2.5A | 4 | AUCL010302E5 | 1985 |
| 30A/3A | 4 | AUCL01030003 | 1985 |
| 30A/4A | 4 | AUCL01030004 | 1985 |
| 30A/5A | 4 | AUCL01030005 | 1985 |
| 30A/6A | 4 | AUCL01030006 | 1985 |
| 30A/8A | 4 | AUCL01030008 | 1985 |
| 30A/10A | 4 | AUCL01030010 | 1985 |
| 30A/12A | 4 | AUCL01030012 | 1985 |
| 30A/15A | 4 | AUCL01030015 | 1985 |
| 30A/20A | 4 | AUCL01030020 | 1985 |
| 30A/30A | 4 | AUCL01030030* | 1985 |

* Non-current limiting variant

AU-COM: Communication Solution [8538]

Range Highlights

- Can be deployed for AU range of MCBs, RCCBs, RCBOs & energy meters
- Capable of local and remote status monitoring of final distribution products- ON, OFF and TRIP
- With AU-COM and modular contactors AU-MC, remote controlling of the load can be achieved
- The convertor module converts RS 485 data signals from AU-COM into SCADA-compatible ethernet signals
- For remote monitoring and metering of energy, single-phase and three-phase energy meters with RS 485 converters or Wi-Fi modules can be used



| Description | Module | CAT Nos. | M.R.P. (₹) Per Unit |
|-----------------------------|--------|-----------|---------------------|
| AU-COM communication module | 1.5 | AUCOM0402 | * |
| AU-CON convertor module | 1.5 | AUCON0403 | * |

* Please contact nearest L&T branch office for details.

New Range of Distribution Boards



Certification

Conforms to IS 8623-1 & 3,
IEC 61439 - 1 & 3



Protection against Mechanical Impact (IK)
Ensures Distribution Boards and
Enclosures are well protected from
external impact



Ingress Protection (IP) Test certificate
Ensures Distribution Boards and
Enclosures are well protected against
external foreign bodies & liquid

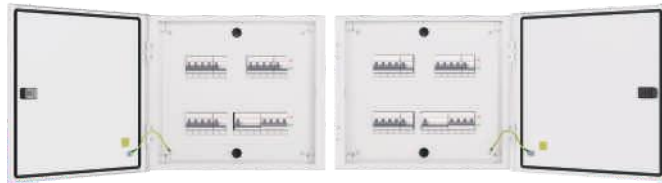


Complete range of Distribution Boards
is RoHS compliant



Customer Benefits

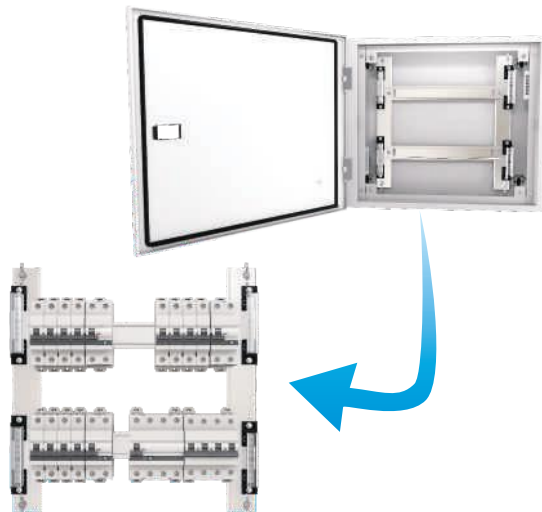
- In order to adapt to site condition, DB door can be reversed at the site



- DB Installation made convenient with independently removable door, shield, frame & chassis
- The removal of the chassis, with the neutral bar mounted on it offers immense flexibility during commissioning



- Product mounting and wiring made easy as the products can be conveniently mounted on the chassis and entire assembly can be easily fitted in the DB box with chassis that can be stored separately



- To avoid unauthorized access to a DB and ensure safety during maintenance, DBs are equipped for installing a special latch with a key lock provision

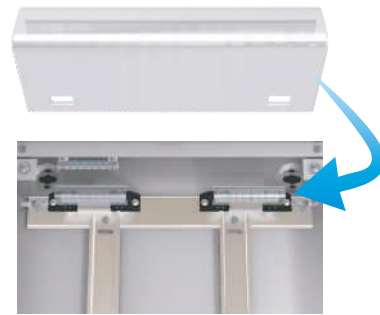


- Flush mounting of a DB made easy and perfect fit is achieved with clearly visible anti insertion marking



Customer Benefits

- No accidental contact with live parts is ensured with
 - Transparent shrouds for neutral bars →
 - High quality insulation on bus-bars



- Assured level of Ingress Protection (IP) with the help of high quality gaskets in double door DBs



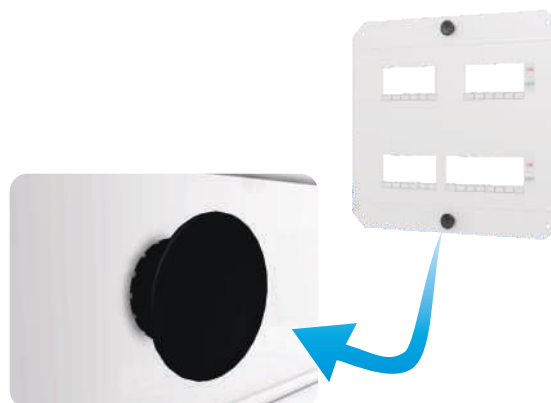
- Protection of DB interiors from cement splashes during civil activities with cement spill protector



- Ease of wiring is facilitated with removable top and bottom gland plates with adequate number of cut and carry knockouts



- Removing of shield made easy with ergonomically designed holding shield knobs

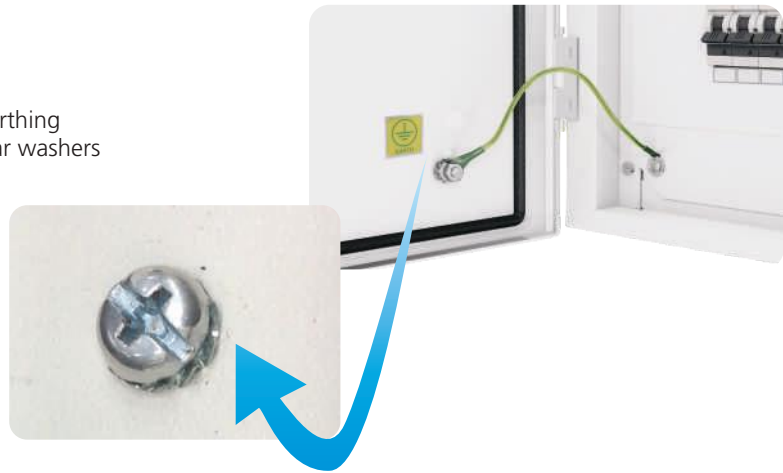


Customer Benefits

- Safe, neat and clutter-free wiring is facilitated with adequate space for wiring



- Complete safety is ensured by effective earthing throughout the distribution board with star washers



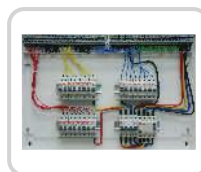
- Independently packed 'door-frame-shield' ensures-
 - Separate and safe storage at site
 - No damage during civil activities



Customized Distribution Boards

Prewired DBs

- Distribution Boards with factory fitted phase and neutral terminal blocks for termination of incoming and outgoing wires
- Available in both Single Phase and Three Phase DB versions



8 segment DBs

- Distribution Boards with phase segregation between incomer, sub incomer, outgoings and supply changeover sections



DBs with provision for TV/Telephone Splitters

- Distribution Boards equipped with provisions to mount TV-Telephone splitters
- Available in both Single phase and Three phase DB versions



DBs with Auto manual switches

- Distribution Boards with inbuilt auto-manual switches
- Available in both Single phase and Three phase DB versions



For any other customized requirements please contact nearest L&T branch

Specially Designed

Distribution Board suitable for Aluminum shuttering (Mivan) Construction



> To experience Scan or Click



DBs suitable for Aluminium Shuttering (Mivan) Construction [8537]

SPN DBs

Highlights

- Available in CRCA sheet steel, RAL9003, powder coated
- Ready to use DBs - Provided with 100A insulated phase bus-bar | neutral bar/s with shroud/s | earth bar/s | sticking saddles | cement spill protector | color-coded interconnecting wire set | cable ties | blanking plates and circuit identification label
- With provision for DP MCB/Isolator/RCCB/RCBO as incomer and SP MCBs as outgoing

| Description | No. of Modules | | Cat. Nos. | M.R.P. (₹) Per Unit |
|---------------------------|----------------|----------|-----------|---------------------------|
| | Incomer | Outgoing | | |
| IP 43 - Metal Door | | | | |
| 4 way | 2 | 2 | LTSD04M | * |
| 6 way | 2 | 4 | LTSD06M | * |
| 8 way | 2 | 6 | LTSD08M | * |
| 12 way | 2 | 10 | LTSD12M | * |
| 16 way | 2 | 14 | LTSD16M | * |

TPN DBs

Highlights

- Available in CRCA sheet steel, RAL 9003, powder coated
- Ready to use DBs - Provided with 100A insulated phase bus-bars | neutral bar/s with shroud/s | earth bar/s | sticking saddles | cement spill protector | color-coded interconnecting wire set | cable ties | blanking plates and circuit identification labels
- With provision for FP MCB/Isolator/RCCB/RCBO as incomer and SP MCBs as outgoing

| Description | No. of Modules | | Cat. Nos. | M.R.P. (₹) Per Unit |
|---------------------------|----------------|----------|-----------|---------------------------|
| | Incomer | Outgoing | | |
| IP 43 - Metal Door | | | | |
| 4 way | 8 | 4+4+4 | LTTD04M | * |
| 6 way | 8 | 6+6+6 | LTTD06M | * |
| 8 way | 8 | 8+8+8 | LTTD08M | * |

* For details, please contact L&T branch office

SPN DB [8537]

Highlights

- IK 08-for single door DBs, IK 09-for double door DBs
- Available in CRCA sheet steel, RAL9003, powder coated
- Ready to use DBs - Provided with 100A insulated phase bus-bar | neutral bar/s with shroud/s | earth bar/s | sticking saddles | cement spill protector | color-coded interconnecting wire set | cable ties | blanking plates and circuit identification label
- With provision for DP MCB/Isolator/RCCB/RCBO as incomer and SP MCBs as outgoing



IP 30 - Single Door

IP 43 - Metal Door

IP 43 - Glazed Door

| Description | No. of Modules | | Cat. Nos. | M.R.P. (₹) Per Unit |
|----------------------------|----------------|----------|------------|---------------------------|
| | Incomer | Outgoing | | |
| IP 30 - Single Door | | | | |
| 4 way | 2 | 2 | DBSPN004SD | 1035 |
| 6 way | 2 | 4 | DBSPN006SD | 1130 |
| 8 way | 2 | 6 | DBSPN008SD | 1305 |
| 12 way | 2 | 10 | DBSPN012SD | 1545 |
| 16 way | 2 | 14 | DBSPN016SD | 1910 |
| 18 way | 2 | 16 | DBSPN018SD | 2295 |
| IP 43 - Metal Door | | | | |
| 4 way | 2 | 2 | DBSPN004DD | 1425 |
| 6 way | 2 | 4 | DBSPN006DD | 1640 |
| 8 way | 2 | 6 | DBSPN008DD | 1760 |
| 12 way | 2 | 10 | DBSPN012DD | 2125 |
| 16 way | 2 | 14 | DBSPN016DD | 2660 |
| 18 way | 2 | 16 | DBSPN018DD | 3300 |
| IP 43 - Glazed Door | | | | |
| 4 way | 2 | 2 | DBSPN004GD | 1785 |
| 6 way | 2 | 4 | DBSPN006GD | 1905 |
| 8 way | 2 | 6 | DBSPN008GD | 2075 |
| 12 way | 2 | 10 | DBSPN012GD | 2510 |
| 16 way | 2 | 14 | DBSPN016GD | 3120 |
| 18 way | 2 | 16 | DBSPN018GD | 3445 |
| IP 54 - Metal Door | | | | |
| 4 way | 2 | 2 | DBSPN00454 | 4285 |
| 6 way | 2 | 4 | DBSPN00654 | 4780 |
| 8 way | 2 | 6 | DBSPN00854 | 5040 |
| 12 way | 2 | 10 | DBSPN01254 | 5820 |
| 16 way | 2 | 14 | DBSPN01654 | 6445 |
| 18 way | 2 | 16 | DBSPN01854 | 6765 |

TPN DB [8537]

Highlights

- IK 08-for single door DBs, IK 09-for double door DBs
- Available in CRCA sheet steel, RAL 9003, powder coated
- Ready to use DBs - Provided with 100A insulated phase bus-bars | neutral bar/s with shroud/s | earth bar/s | sticking saddles | cement spill protector | color-coded interconnecting wire set | cable ties | blanking plates and circuit identification labels
- With provision for FP MCB/Isolator/RCCB/RCBO as incomer and SP MCBs as outgoing



IP 30 - Single Door

IP 43 - Metal Door

IP 43 - Glazed Door

| Description | No. of Modules | | Cat. Nos. | M.R.P. (₹) Per Unit |
|----------------------------|----------------|----------|------------|---------------------------|
| | Incomer | Outgoing | | |
| IP 30 - Single Door | | | | |
| 4 way | 4 | 4+4+4 | DBTPE004SD | 2685 |
| 6 way | 4 | 6+6+6 | DBTPE006SD | 3300 |
| 4 way | 8 | 4+4+4 | DBTPN004SD | 2885 |
| 6 way | 8 | 6+6+6 | DBTPN006SD | 3555 |
| 8 way | 8 | 8+8+8 | DBTPN008SD | 4180 |
| 12 way | 8 | 12+12+12 | DBTPN012SD | 6190 |
| 16 way | 8 | 16+16+16 | DBTPN016SD | 7625 |
| IP 43 - Metal Door | | | | |
| 4 way | 4 | 4+4+4 | DBTPE004DD | 3280 |
| 6 way | 4 | 6+6+6 | DBTPE006DD | 4045 |
| 4 way | 8 | 4+4+4 | DBTPN004DD | 3495 |
| 6 way | 8 | 6+6+6 | DBTPN006DD | 4310 |
| 8 way | 8 | 8+8+8 | DBTPN008DD | 5160 |
| 12 way | 8 | 12+12+12 | DBTPN012DD | 7730 |
| 16 way | 8 | 16+16+16 | DBTPN016DD | 9530 |
| IP 43 - Glazed Door | | | | |
| 4 way | 4 | 4+4+4 | DBTPE004GD | 4185 |
| 6 way | 4 | 6+6+6 | DBTPE006GD | 5165 |
| 4 way | 8 | 4+4+4 | DBTPN004GD | 4465 |
| 6 way | 8 | 6+6+6 | DBTPN006GD | 5505 |
| 8 way | 8 | 8+8+8 | DBTPN008GD | 6600 |
| 12 way | 8 | 12+12+12 | DBTPN012GD | 10125 |
| 16 way | 8 | 16+16+16 | DBTPN016GD | 12150 |
| IP 54 - Metal Door | | | | |
| 4 way | 4 | 4+4+4 | DBTPE00454 | 10140 |
| 6 way | 4 | 6+6+6 | DBTPE00654 | 12510 |
| 4 way | 8 | 4+4+4 | DBTPN00454 | 10675 |
| 6 way | 8 | 6+6+6 | DBTPN00654 | 12850 |
| 8 way | 8 | 8+8+8 | DBTPN00854 | 14055 |
| 12 way | 8 | 12+12+12 | DBTPN01254 | 19805 |
| 16 way | 8 | 16+16+16 | DBTPN01654 | 23775 |

PPI DB [8537]

Highlights

- IK 09-for double door DBs
- Available in CRCA sheet steel, RAL 9003, powder coated
- Ready to use DBs - Provided with 100A insulated phase bus-bars | neutral bar/s with shroud/s | earth bar/s | sticking saddles | cement spill protector | color-coded interconnecting wire set | cable ties | blanking plates and circuit identification labels
- With provision for FP MCB/Isolator//RCCB/RCBO as incomer, DP RCCB/RCBO as sub-incomer and SP MCBs as outgoing



Horizontal PPI DBs

IP 43 - Metal Door

| Description | No. of Modules | | | Cat. Nos. | M.R.P. (₹) Per Unit |
|---------------------------|----------------|-------------|----------|------------|---------------------------|
| | Incomer | Sub-Incomer | Outgoing | | |
| IP 43 - Metal Door | | | | | |
| 4 way | 8 | 2+2+2 | 4+4+4 | DBHPI004DD | 5750 |
| 6 way | 8 | 2+2+2 | 6+6+6 | DBHPI006DD | 6865 |
| 8 way | 8 | 2+2+2 | 8+8+8 | DBHPI008DD | 8160 |
| 12 way | 8 | 2+2+2 | 12+12+12 | DBHPI012DD | 11155 |
| 16 way | 8 | 2+2+2 | 16+16+16 | DBHPI016DD | 13385 |
| IP 54 - Metal Door | | | | | |
| 4 way | 8 | 2+2+2 | 4+4+4 | DBHPI00454 | 12790 |
| 6 way | 8 | 2+2+2 | 6+6+6 | DBHPI00654 | 15235 |
| 8 way | 8 | 2+2+2 | 8+8+8 | DBHPI00854 | 16825 |
| 12 way | 8 | 2+2+2 | 12+12+12 | DBHPI01254 | 22970 |
| 16 way | 8 | 2+2+2 | 16+16+16 | DBHPI01654 | 27315 |



Tier PPI DBs

IP 43 - Metal Door

| Description | No. of Modules | | | Cat. Nos. | M.R.P. (₹) Per Unit |
|---------------------------|----------------|-------------|----------|------------|---------------------------|
| | Incomer | Sub-Incomer | Outgoing | | |
| IP 43 - Metal Door | | | | | |
| 6 way | 8 | 2+2+2 | 6+6+6 | DBTPI006DD | 7210 |
| 8 way | 8 | 2+2+2 | 8+8+8 | DBTPI008DD | 9045 |
| 10 way | 8 | 2+2+2 | 10+10+10 | DBTPI010DD | 9485 |
| 12 way | 8 | 2+2+2 | 12+12+12 | DBTPI012DD | 10320 |
| 16 way | 8 | 2+2+2 | 16+16+16 | DBTPI016DD | 10865 |
| 12 way | MCCB* | 2+2+2 | 12+12+12 | DBTPL012DD | 10750 |
| IP 54 - Metal Door | | | | | |
| 6 way | 8 | 2+2+2 | 6+6+6 | DBTPI00654 | 11850 |
| 8 way | 8 | 2+2+2 | 8+8+8 | DBTPI00854 | 14875 |
| 10 way | 8 | 2+2+2 | 10+10+10 | DBTPI01054 | 15605 |
| 12 way | 8 | 2+2+2 | 12+12+12 | DBTPI01254 | 16970 |
| 16 way | 8 | 2+2+2 | 16+16+16 | DBTPI01654 | 17870 |
| 12 way | MCCB* | 2+2+2 | 12+12+12 | DBTPL01254 | 17685 |

* Suitable for 3 Pole & 4 Pole DU100H, DU100D, DN0-100D & DN0-100C MCCB as incomer

TPN Phase Segregated DB [8537]

Highlights

- IK 08-for single door DBs. IK 09-for double door DBs
- Available in CRCA sheet steel, RAL 9003, powder coated
- Ready to use DBs - Provided with 100A insulated phase bus-bars | neutral bar/s with shroud/s | earth bar/s | sticking saddles | cement spill protector | color-coded interconnecting wire set | cable ties | blanking plates and circuit identification labels
- With provision for 1. Modular Incomer - FP MCB/Isolator/RCCB/RCBO as incomer, DP RCCB/RCBO as sub-incomer and SP MCBs as outgoing
2. MCCB Incomer - MCCB* as incomer, DP RCCB/RCBO as sub-incomer and SP MCBs as outgoing



IP 30 - Single Door



IP 43 - Metal Door

With Modular Incomer

| Description | No. of Modules | | | Cat. Nos. | M.R.P. (₹) Per Unit |
|----------------------------|----------------|-------------|----------|------------|---------------------------|
| | Incomer | Sub-Incomer | Outgoing | | |
| IP 30 - Single Door | | | | | |
| 4 way | 8 | 4+4+4 | 4+4+4 | DBPSG004SD | 8020 |
| 6 way | 8 | 4+4+4 | 6+6+6 | DBPSG006SD | 8755 |
| 8 way | 8 | 4+4+4 | 8+8+8 | DBPSG008SD | 9380 |
| 12 way | 8 | 4+4+4 | 12+12+12 | DBPSG012SD | 10795 |
| IP 43 - Metal Door | | | | | |
| 4 way | 8 | 4+4+4 | 4+4+4 | DBPSG004DD | 9140 |
| 6 way | 8 | 4+4+4 | 6+6+6 | DBPSG006DD | 10305 |
| 8 way | 8 | 4+4+4 | 8+8+8 | DBPSG008DD | 11500 |
| 12 way | 8 | 4+4+4 | 12+12+12 | DBPSG012DD | 14395 |
| IP 54 - Metal Door | | | | | |
| 4 way | 8 | 4+4+4 | 4+4+4 | DBPSG00454 | 14605 |
| 6 way | 8 | 4+4+4 | 6+6+6 | DBPSG00654 | 16445 |
| 8 way | 8 | 4+4+4 | 8+8+8 | DBPSG00854 | 18370 |
| 12 way | 8 | 4+4+4 | 12+12+12 | DBPSG01254 | 23435 |



IP 30 - Single Door



IP 43 - Metal Door

With MCCB Incomer

| Description | No. of Modules | | | Cat. Nos. | M.R.P. (₹) Per Unit |
|----------------------------|----------------|-------------|----------|------------|---------------------------|
| | Incomer* | Sub-Incomer | Outgoing | | |
| IP 30 - Single Door | | | | | |
| 4 way | MCCB | 4+4+4 | 4+4+4 | DBPGL004SD | 11550 |
| 6 way | MCCB | 4+4+4 | 6+6+6 | DBPGL006SD | 13295 |
| 8 way | MCCB | 4+4+4 | 8+8+8 | DBPGL008SD | 15270 |
| 12 way | MCCB | 4+4+4 | 12+12+12 | DBPGL012SD | 17730 |
| IP 43 - Metal Door | | | | | |
| 4 way | MCCB | 4+4+4 | 4+4+4 | DBPGL004DD | 13180 |
| 6 way | MCCB | 4+4+4 | 6+6+6 | DBPGL006DD | 15075 |
| 8 way | MCCB | 4+4+4 | 8+8+8 | DBPGL008DD | 17270 |
| 12 way | MCCB | 4+4+4 | 12+12+12 | DBPGL012DD | 19660 |
| IP 54 - Metal Door | | | | | |
| 4 way | MCCB | 4+4+4 | 4+4+4 | DBPGL00454 | 21230 |
| 6 way | MCCB | 4+4+4 | 6+6+6 | DBPGL00654 | 24285 |
| 8 way | MCCB | 4+4+4 | 8+8+8 | DBPGL00854 | 27820 |
| 12 way | MCCB | 4+4+4 | 12+12+12 | DBPGL01254 | 31680 |

* Suitable for 3 Pole & 4 Pole DU100H, DU100D, DN0-100D & DN0-100C MCCB as incomer

TPN Phase Selector DB [8537]

Highlights

- IK 08-for single door DBs, IK 09-for double door DBs
- Available in CRCA sheet steel, RAL 9003, powder coated
- Ready to use DBs - Provided with 3 nos. of 63A L&T rotary switches | 3 nos. of rocker switches for phase identification | 100A insulated phase bus-bars | neutral bar/s with shroud/s | earth bar/s | sticking saddles | color-coded interconnecting wire set | cable ties | blanking plates and circuit identification labels
- With provision for - FP MCB/Isolator/RCCB/RCBO as incomer and SP MCBs as outgoing



IP 30 - Single Door



IP 43 - Metal Door

| Description | No. of Modules | | Cat. Nos. | M.R.P. (₹) Per Unit |
|----------------------------|----------------|----------|------------|---------------------------|
| | Incomer | Outgoing | | |
| IP 30 - Single Door | | | | |
| 4 way | 8 | 4+4+4 | DBPSR004SD | 11055 |
| 6 way | 8 | 6+6+6 | DBPSR006SD | 11750 |
| 8 way | 8 | 8+8+8 | DBPSR008SD | 13020 |
| 10 way | 8 | 10+10+10 | DBPSR010SD | 13505 |
| 12 way | 8 | 12+12+12 | DBPSR012SD | 14290 |
| IP 43 - Metal Door | | | | |
| 4 way | 8 | 4+4+4 | DBPSR004DD | 12405 |
| 6 way | 8 | 6+6+6 | DBPSR006DD | 12605 |
| 8 way | 8 | 8+8+8 | DBPSR008DD | 13500 |
| 10 way | 8 | 10+10+10 | DBPSR010DD | 14425 |
| 12 way | 8 | 12+12+12 | DBPSR012DD | 15210 |
| IP 54 - Metal Door | | | | |
| 4 way | 8 | 4+4+4 | DBPSR00454 | 15890 |
| 6 way | 8 | 6+6+6 | DBPSR00654 | 16145 |
| 8 way | 8 | 8+8+8 | DBPSR00854 | 17300 |
| 10 way | 8 | 10+10+10 | DBPSR01054 | 18480 |
| 12 way | 8 | 12+12+12 | DBPSR01254 | 19480 |

Flexi/Row DB [8537]

Highlights

- IK 08-for single door DBs, IK 09-for double door DBs
- Available in CRCA sheet steel, RAL 9003, powder coated
- Ready to use DBs - neutral bar/s with shroud/s | earth bar/s | sticking saddles | cement spill protector | cable ties | blanking plates and circuit identification labels
- With provision to mount modular devices as per requirement



IP 30 - Single Door



IP 43 - Metal Door



IP 43 - Glazed Door

| Description | No. of Modules Per Row | Cat. Nos. | M.R.P. (₹) Per Unit |
|----------------------------|---------------------------|------------|---------------------------|
| IP 30 - Single Door | | | |
| 2 Row 28 Module | 14 | DBROW228SD | 3705 |
| 3 Row 42 Module | 14 | DBROW342SD | 4450 |
| 4 Row 56 Module | 14 | DBROW456SD | 5095 |
| 4 Row 64 Module | 16 | DBROW464SD | 5720 |
| IP 43 - Metal Door | | | |
| 2 Row 28 Module | 14 | DBROW228DD | 4180 |
| 3 Row 42 Module | 14 | DBROW342DD | 5015 |
| 4 Row 56 Module | 14 | DBROW456DD | 5750 |
| 4 Row 64 Module | 16 | DBROW464DD | 6450 |
| IP 43 - Glazed Door | | | |
| 2 Row 28 Module | 14 | DBROW228GD | 4790 |
| 3 Row 42 Module | 14 | DBROW342GD | 5870 |
| 4 Row 56 Module | 14 | DBROW456GD | 6655 |
| 4 Row 64 Module | 16 | DBROW464GD | 7300 |
| IP 54 - Metal Door | | | |
| 2 Row 28 Module | 14 | DBROW22854 | 7330 |
| 3 Row 42 Module | 14 | DBROW34254 | 9065 |
| 4 Row 56 Module | 14 | DBROW45654 | 9875 |
| 4 Row 64 Module | 16 | DBROW46454 | 10900 |

DB Accessories

Busbar - Fork Type [8538]

Highlights

- Conforms to IEC 61439-3
- Available in Single Pole, Double Pole, Three Pole and Four Pole versions
- Material : Copper



| Description | Cat. Nos. | M.R.P. (₹) Per Unit | Std. Pack Qty. |
|--------------------|-----------|---------------------------|----------------------|
| SP 13 Mod | BSP13 | 265 | 5 |
| SP 56 Mod | BSP56 | 995 | 5 |
| DP 12 Mod | BDP12 | 435 | 5 |
| TP 12 Mod | BTP12 | 465 | 5 |
| FP 12 Mod | BFP12 | 975 | 5 |
| End Caps for SP | ECP01 | 10 | 10 |
| End Caps for DP/TP | ECP03 | 30 | 10 |
| End Caps for FP | ECP04 | 45 | 10 |

Blanking Plates [8538]

Highlights

- Available in One module and Half module



| Description | Cat. Nos. | M.R.P. (₹) Per Unit | Std. Pack Qty. |
|-------------|-----------|---------------------------|----------------------|
| One Module | BKP10 | 15 | 10 |
| Half Module | BKP05 | 15 | 10 |

Padlock [8301]

Highlights

- Version with standard lock and a common key



PDK02

| Description | Cat. Nos. | M.R.P. (₹) Per Unit | Std. Pack Qty. |
|------------------|-----------|---------------------------|----------------------|
| Lock and Key Kit | PDK02 | 460 | 5 |

Vertical TPN DB with Modular Incomer [8537]

Highlights

- IK 08-for single door DBs, IK 09-for double door DBs
- Available in CRCA sheet steel, RAL 9003, powder coated
- Ready to use DBs - Provided with insulated vertical phase bus-bars | neutral bar/s with shroud/s | earth bar/s | sticking saddles | cement spill protector | color-coded interconnecting wire set | cable ties | blanking plates and circuit identification labels
- With provision for FP MCB/Isolator/RCCB/RCBO as incomer and SP/TP MCBs as outgoing



IP 30 - Single Door

IP 43 - Metal Door

IP 43 - Glazed Door

| Description | No. of Modules | | Cat. Nos. | M.R.P. (₹) Per Unit |
|----------------------------|----------------|----------|------------|---------------------|
| | Incomer | Outgoing | | |
| IP 30 - Single Door | | | | |
| 4 way | 8 | 4+4+4 | DBVTM004SD | 7710 |
| 6 way | 8 | 6+6+6 | DBVTM006SD | 8270 |
| 8 way | 8 | 8+8+8 | DBVTM008SD | 9410 |
| 12 way | 8 | 12+12+12 | DBVTM012SD | 13320 |
| 16 way | 8 | 16+16+16 | DBVTM016SD | 15715 |
| IP 43 - Metal Door | | | | |
| 4 way | 8 | 4+4+4 | DBVTM004DD | 8205 |
| 6 way | 8 | 6+6+6 | DBVTM006DD | 9830 |
| 8 way | 8 | 8+8+8 | DBVTM008DD | 10995 |
| 12 way | 8 | 12+12+12 | DBVTM012DD | 14905 |
| 16 way | 8 | 16+16+16 | DBVTM016DD | 17945 |
| IP 43 - Glazed Door | | | | |
| 4 way | 8 | 4+4+4 | DBVTM004GD | 11030 |
| 6 way | 8 | 6+6+6 | DBVTM006GD | 11890 |
| 8 way | 8 | 8+8+8 | DBVTM008GD | 14020 |
| 12 way | 8 | 12+12+12 | DBVTM012GD | 18335 |
| 16 way | 8 | 16+16+16 | DBVTM016GD | 19855 |
| IP 54 - Metal Door | | | | |
| 4 way | 8 | 4+4+4 | DBVTM00454 | 16965 |
| 6 way | 8 | 6+6+6 | DBVTM00654 | 18505 |
| 8 way | 8 | 8+8+8 | DBVTM00854 | 19810 |
| 12 way | 8 | 12+12+12 | DBVTM01254 | 26655 |
| 16 way | 8 | 16+16+16 | DBVTM01654 | 28790 |

Vertical TPN DB with MCCB Incomer [8537]

Highlights

- IK 08-for single door DBs, IK 09-for double door DBs
- Available in CRCA sheet steel, RAL 9003, powder coated
- Ready to use DBs - Provided with insulated vertical phase bus-bars | neutral bar/s with shroud/s | earth bar/s | sticking saddles | cement spill protector | color-coded interconnecting wire set | cable ties | blanking plates and circuit identification labels
- With provision for 3 pole and 4 Pole MCCB* as incomer and SP/TP MCBs as outgoing



IP 30 - Single Door

IP 43 - Metal Door

IP 43 - Glazed Door

| Description | No. of Modules | | Cat. Nos. | M.R.P. (₹) Per Unit |
|----------------------------|----------------|----------|------------|---------------------|
| | Incomer* | Outgoing | | |
| IP 30 - Single Door | | | | |
| 4 way | MCCB | 4+4+4 | DBVTL004SD | 9415 |
| 6 way | MCCB | 6+6+6 | DBVTL006SD | 10230 |
| 8 way | MCCB | 8+8+8 | DBVTL008SD | 11140 |
| 12 way | MCCB | 12+12+12 | DBVTL012SD | 16515 |
| 16 way | MCCB | 16+16+16 | DBVTL016SD | 19535 |
| IP 43 - Metal Door | | | | |
| 4 way | MCCB | 4+4+4 | DBVTL004DD | 10285 |
| 6 way | MCCB | 6+6+6 | DBVTL006DD | 11805 |
| 8 way | MCCB | 8+8+8 | DBVTL008DD | 12930 |
| 12 way | MCCB | 12+12+12 | DBVTL012DD | 17205 |
| 16 way | MCCB | 16+16+16 | DBVTL016DD | 20245 |
| IP 43 - Glazed Door | | | | |
| 4 way | MCCB | 4+4+4 | DBVTL004GD | 11860 |
| 6 way | MCCB | 6+6+6 | DBVTL006GD | 13435 |
| 8 way | MCCB | 8+8+8 | DBVTL008GD | 15160 |
| 12 way | MCCB | 12+12+12 | DBVTL012GD | 20205 |
| 16 way | MCCB | 16+16+16 | DBVTL016GD | 22370 |
| IP 54 - Metal Door | | | | |
| 4 way | MCCB | 4+4+4 | DBVTL00454 | 19335 |
| 6 way | MCCB | 6+6+6 | DBVTL00654 | 20735 |
| 8 way | MCCB | 8+8+8 | DBVTL00854 | 23245 |
| 12 way | MCCB | 12+12+12 | DBVTL01254 | 29335 |
| 16 way | MCCB | 16+16+16 | DBVTL01654 | 35100 |

* Suitable for 3 Pole & 4 Pole DU100H, DU100D, DU125D, DU125H & DNO MCCB as incomer

Vertical TPN DB with MCCB Incomer

Up to 250A MCCB Incomer

[8537]



IP 30 - Single Door IP 43 - Metal Door IP 43 - Glazed Door

| Description | No. of Modules | | Cat. Nos. | M.R.P. (₹) Per Unit |
|----------------------------|----------------|----------|------------|---------------------------|
| | Incomer* | Outgoing | | |
| IP 30 - Single Door | | | | |
| 4 way | MCCB | 4+4+4 | DBVTH004SD | 11285 |
| 6 way | MCCB | 6+6+6 | DBVTH006SD | 11840 |
| 8 way | MCCB | 8+8+8 | DBVTH008SD | 13020 |
| 12 way | MCCB | 12+12+12 | DBVTH012SD | 18395 |
| 16 way | MCCB | 16+16+16 | DBVTH016SD | 22165 |
| IP 43 - Metal Door | | | | |
| 4 way | MCCB | 4+4+4 | DBVTH004DD | 12785 |
| 6 way | MCCB | 6+6+6 | DBVTH006DD | 14525 |
| 8 way | MCCB | 8+8+8 | DBVTH008DD | 15970 |
| 12 way | MCCB | 12+12+12 | DBVTH012DD | 21375 |
| 16 way | MCCB | 16+16+16 | DBVTH016DD | 25380 |
| IP 43 - Glazed Door | | | | |
| 4 way | MCCB | 4+4+4 | DBVTH004GD | 20995 |
| 6 way | MCCB | 6+6+6 | DBVTH006GD | 23555 |
| 8 way | MCCB | 8+8+8 | DBVTH008GD | 24500 |
| 12 way | MCCB | 12+12+12 | DBVTH012GD | 25815 |
| 16 way | MCCB | 16+16+16 | DBVTH016GD | 27780 |
| IP 54 - Metal Door | | | | |
| 4 way | MCCB | 4+4+4 | DBVTH00454 | 27520 |
| 6 way | MCCB | 6+6+6 | DBVTH00654 | 30050 |
| 8 way | MCCB | 8+8+8 | DBVTH00854 | 31080 |
| 12 way | MCCB | 12+12+12 | DBVTH01254 | 36390 |
| 16 way | MCCB | 16+16+16 | DBVTH01654 | 38305 |

* Suitable for 3 pole and 4 pole DU250, DU250C & DN1 MCCB as incomer

Enclosure [8537]

Highlights

- Suitable for Surface and Flush mounting
- Available in CRCA sheet steel, RAL9003, powder coated
- With provision to mount MCB/Isolator/RCCB/RCBO and other modular devices



IP 30 - Metal Door

| Description | No. of Modules | Cat. Nos. | M.R.P. (₹) Per Unit |
|---------------------------|----------------|------------|---------------------------|
| IP 30 - Metal Door | | | |
| 2 way | 2 | DBENC002SD | 540 |
| 3 way | 3 | DBENC003SD | 540 |
| 4 way | 4 | DBENC004SD | 540 |
| 6 way | 6 | DBENC006SD | 810 |

Plug & Socket DB [8537]

Highlights

- Suitable for Surface and Flush mounting
- Available in CRCA sheet steel, RAL9003, powder coated
- Loose Metal Plugs & Sockets conforms to IS 8804; available in Single Phase & Three Phase



Metal Plug & Socket



Plastic Plug & Socket

| Description | No. of Pins | No. of Modules | Cat. Nos. | M.R.P. (₹) Per Unit |
|-----------------------------------|-------------|----------------|------------|---------------------------|
| Metal Plug & Sockets | | | | |
| 10 A, 2 Pin + SC [^] | P + N | 1 | DBMPS110SD | 1385 |
| 20 A, 2 Pin + SC [^] | P + N | 1 | DBMPS120SD | 1490 |
| 20 A, 2 Pin + SC [^] | P + N | 2 | DBMPS220SD | 1620 |
| 20 A, 3 Pin + SC [^] | 3P | 3 | DBMPS320SD | 2745 |
| 32 A, 3 Pin + SC [^] | 3P | 3 | DBMPS332SD | 3245 |
| 32 A, 3 Pin + SC [^] | 3P | 4 | DBMPS432SD | 3450 |
| 63 A, 5 Pin + SC [^] | 3P+N+E | 4 | DBMPS463SD | 11710 |
| Plastic Plug & Sockets | | | | |
| 16 A, 3 Pin | P+N+E | 2 | DBPPS316SD | 2250 |
| 32 A, 3 Pin | P+N+E | 4 | DBPPS332SD | 2430 |
| 32 A, 5 Pin | 3P+N+E | 8 | DBPPS532SD | 4415 |
| 63 A, 5 Pin | 3P+N+E | 8 | DBPPS563SD | 11225 |

Metal Plug [8536]



| Description | No. of Pins | Cat. Nos. | M.R.P. (₹) Per Unit |
|-------------------------------|-------------|-----------|---------------------------|
| 10 A, 2 Pin + SC [^] | P + N | MPS210P | 145 |
| 20 A, 2 Pin + SC [^] | P + N | MPS220P | 155 |
| 20 A, 3 Pin + SC [^] | 3P | MPS320P | 200 |
| 32 A, 3 Pin + SC [^] | 3P | MPS332P | 375 |

Note: Standard pack quantity - 20 nos.

Metal Socket [8536]



| Description | No. of Pins | Cat. Nos. | M.R.P. (₹) Per Unit |
|-------------------------------|-------------|-----------|---------------------------|
| 10 A, 2 Pin + SC [^] | P + N | MPS210S | 145 |
| 20 A, 2 Pin + SC [^] | P + N | MPS220S | 170 |
| 20 A, 3 Pin + SC [^] | 3P | MPS320S | 225 |
| 32 A, 3 Pin + SC [^] | 3P | MPS332S | 375 |

[^]SC-Scraping Earth

Note: Standard pack quantity - 20 nos.

Cable End Boxes [8537]

Highlights

- Available in CRCA sheet steel, RAL9003, powder coated
- Can be either at the top or bottom of the distribution board



| Description | Cat. Nos. | M.R.P. (₹) Per Unit |
|---|------------|---------------------|
| CEB for SPN DBs | | |
| CEB-SPN Double Door, 4 way | DBSPN004CB | 610 |
| CEB-SPN Double Door, 6 way | DBSPN006CB | 650 |
| CEB-SPN Double Door, 8 way | DBSPN008CB | 720 |
| CEB-SPN Double Door, 12 way | DBSPN012CB | 805 |
| CEB-SPN Double Door, 16 way | DBSPN016CB | 1125 |
| CEB-SPN Double Door, 18 way | DBSPN018CB | 1190 |
| CEB for TPN DBs | | |
| CEB-TPN Double Door, 4 way | DBTPN004CB | 970 |
| CEB-TPN Double Door, 6 way | DBTPN006CB | 1205 |
| CEB-TPN Double Door, 8 way | DBTPN008CB | 1900 |
| CEB-TPN Double Door, 12 way | DBTPN012CB | 2445 |
| CEB-TPN Double Door, 16 way | DBTPN016CB | 2470 |
| CEB-TPE Double Door, 4 way | DBTPE004CB | 910 |
| CEB-TPE Double Door, 6 way | DBTPE006CB | 1140 |
| CEB for Horizontal PPI DBs | | |
| CEB-Horz. PPI Double Door, 4 way | DBHPI004CB | 1120 |
| CEB-Horz. PPI Double Door, 6 way | DBHPI006CB | 1270 |
| CEB-Horz. PPI Double Door, 8 way | DBHPI008CB | 1495 |
| CEB-Horz. PPI Double Door, 12 way | DBHPI012CB | 1675 |
| CEB-Horz. PPI Double Door, 16 way | DBHPI016CB | 1890 |
| CEB for Tier PPI DBs | | |
| CEB-Tier PPI Double Door, 6 way | DBTPI006CB | 1060 |
| CEB-Tier PPI Double Door, 8 way | DBTPI008CB | 1105 |
| CEB-Tier PPI Double Door, 10 way | DBTPI010CB | 1340 |
| CEB-Tier PPI Double Door, 12 way | DBTPI012CB | 1640 |
| CEB-Tier PPI Double Door, 16 way | DBTPI016CB | 1745 |
| CEB-Tier PPI Double Door, 12 way MCCB incomer | DBTPL012CB | 1660 |

| Description | Cat. Nos.. | M.R.P. (₹) Per Unit |
|---|------------|---------------------|
| CEB for VTPN DBs | | |
| CEB-VTPN Double Door, Modular Incomer | DBVTMXXXCB | 810 |
| CEB-VTPN Double Door, MCCB Incomer | DBVTXXXCB | 2900 |
| CEB for FLEXI DBs | | |
| CEB for Flexi DBs with 14 Modules per Row | DBROWX14CB | 850 |
| CEB for Flexi DBs with 16 Modules per Row | DBROWX16CB | 985 |
| CEB for Phase Segregated DBs | | |
| CEB-PSG Double Door, 4 way | DBPSG004CB | 1900 |
| CEB-PSG Double Door, 6 way | DBPSG006CB | 2260 |
| CEB-PSG Double Door, 8 way | DBPSG008CB | 2505 |
| CEB-PSG Double Door, 12 way | DBPSG012CB | 2785 |
| CEB for Phase Selector DBs | | |
| CEB-Phase Selector Double Door, 4 way | DBPSR004CB | 840 |
| CEB-Phase Selector Double Door, 6 way | DBPSR006CB | 950 |
| CEB-Phase Selector Double Door, 8 way | DBPSR008CB | 1545 |
| CEB-Phase Selector Double Door, 10 way | DBPSR010CB | 1780 |
| CEB-Phase Selector Double Door, 12 way | DBPSR012CB | 1930 |

DBs with provision for TV / Telephone splitters [8537]

Highlights

- Distribution Boards equipped with provisions to mount TV / Telephone splitters
- Available in SPN & TPN DBs



| DB Type | Description | No. of Modules Incomer + Outgoing | | Cat. Nos. | M.R.P. (₹) Per Unit |
|---------------------------|-------------|--------------------------------------|-------|--------------|---------------------|
| IP 43 - Metal Door | | | | | |
| SPN | 6 way | 2 | 4 | DBSPN006DDTV | 3065 |
| | 8 way | 2 | 6 | DBSPN008DDTV | 3300 |
| | 12 way | 2 | 10 | DBSPN012DDTV | 4080 |
| | 16 way | 2 | 14 | DBSPN016DDTV | 4705 |
| | 18 way | 2 | 16 | DBSPN018DDTV | 5780 |
| TPN | 4 way | 8 | 4+4+4 | DBTPN004DDTV | 5940 |
| | 6 way | 8 | 6+6+6 | DBTPN006DDTV | 6860 |
| | 8 way | 8 | 8+8+8 | DBTPN008DDTV | 7960 |

Distribution
Transformer

Power
Control
Centre
(PCC)

Main
Distribution
Board
(MDB)



Final
Distribution
Board
(FDB)

Off-the-shelf Solution for Power Distribution

Sub-Main Distribution Board **ENERSYS-S**

- Ready-to-use solution with MCCB as incomer and multiple MCCBs as outgoing devices
- Suitable for power distribution in commercial buildings, hotels, hospitals and educational establishments
- Incomer MCCB ratings – 250A, 400A, 630A
- Ingress Protection – IP43
- Short-time withstand current
 - 250A & 400A SMDB - 36 kA 1s
 - 630A SMDB - 50 kA 1s
- Metering and cabling extensions as add-on accessories
- Certified by ASTA and DEKRA as per IEC 61439-1 & 2

Customer Interaction Center (CIC)

BSNL / MTNL (toll free): 1800 233 5858 Reliance (toll free): 1800 200 5858
Tel: 022 6774 5858 Email: cic@Lntebg.com Web: www.Lntebg.com

Distribution Board (DB) Selection Guide

| | |
|------------------------------------|---|
| SPN | <ul style="list-style-type: none"> - For single phase supply distribution |
| TPN | <ul style="list-style-type: none"> - For three phase supply distribution |
| TPN - Horizontal PPI | <ul style="list-style-type: none"> - For three phase supply distribution in Horizontal disposition - Isolation between phases is achieved with leakage protection device as sub-incomer and separate neutral bar for individual phases (PPI - Per Phase Isolation) - In case one of the circuits experiences earth leakage fault in a specific phase, sub-incomer of that phase trips leaving other phases operate normally |
| TPN - Tier PPI | <ul style="list-style-type: none"> - For three phase supply distribution in Tier/Vertical disposition - Isolation between phases is achieved with leakage protection device as sub-incomer and separate neutral bar for individual phases (PPI - Per Phase Isolation) - In case one of the circuits experiences earth leakage fault in a specific phase, sub-incomer of that phase trips leaving other phases operate normally |
| VTPN Modular Incomer | <ul style="list-style-type: none"> - For three phase supply distribution (Vertical TPN) - For sites with constraint on mounting DB of higher width - Higher rating (125A) of incomer and corresponding bus bar - Combination of single phase and three phase outgoing MCBs - DBs come with PAN assembly for ready installation of incomer and outgoing devices |
| VTPN MCCB Incomer | <ul style="list-style-type: none"> - For three phase supply distribution - For sites with constraint on mounting DB of higher width - Combination of single phase and three phase outgoing MCBs - For MCCB as incomer (with current rating up to 250A) with typically higher breaking capacity than that of an MCB - DBs come with PAN assembly for ready installation of incomer and outgoing devices |
| TPN - Phase Segregated (7 Segment) | <ul style="list-style-type: none"> - For three phase supply distribution - Isolation between phases is achieved with leakage protection device as sub-incomer and separate neutral bar for individual phases - Physical separation between outgoing phases, phase sub-incomer and main incomer - Owing to compartmental design, any of the sections can be individually opened |
| TPN - Phase Selector | <ul style="list-style-type: none"> - For three phase supply distribution - To maintain continuity of supply to a critical load by switching over to live phase temporarily |
| Flexi / Row | <ul style="list-style-type: none"> - Choice of either single phase or three phase supply distribution - Choice of number of modules for incoming and outgoing as per specific requirement - Choice of installing monitoring and control devices |
| Enclosure | <ul style="list-style-type: none"> - Enclosure for modular devices |
| Plug & Socket | <ul style="list-style-type: none"> - Providing protection to standalone single phase and three phase loads |

Dimension Details SPN DB

IP 30 single door

BOX DEPTH TO BE FLUSHED INSIDE THE WALL

| CAT No. | No. of Ways | A | B | C | Top/Bottom Knock out | | Side Knock out |
|------------|-------------|-----|-----|-----|----------------------|-----|----------------|
| | | | | | Ø32 | Ø25 | |
| DBSPN004SD | 4 | 180 | 228 | 105 | 2 | 0 | 1 |
| DBSPN006SD | 6 | 215 | 263 | 140 | 2 | 2 | 1 |
| DBSPN008SD | 8 | 250 | 298 | 175 | 2 | 2 | 1 |
| DBSPN012SD | 12 | 320 | 368 | 245 | 2 | 4 | 1 |
| DBSPN016SD | 16 | 390 | 438 | 315 | 2 | 6 | 1 |
| DBSPN018SD | 18 | 425 | 473 | 350 | 2 | 6 | 1 |

MOUNTING HOLE DETAILS SUITABLE FOR M8 BOLT

IP 43 metal door

BOX DEPTH TO BE FLUSHED INSIDE THE WALL

| CAT No. | No. of Ways | A | B | C | Top/Bottom Knock out | | Side Knock out |
|------------|-------------|-----|-----|-----|----------------------|-----|----------------|
| | | | | | Ø32 | Ø25 | |
| DBSPN004DD | 4 | 180 | 236 | 105 | 2 | 0 | 1 |
| DBSPN006DD | 6 | 215 | 271 | 140 | 2 | 2 | 1 |
| DBSPN008DD | 8 | 250 | 306 | 175 | 2 | 2 | 1 |
| DBSPN012DD | 12 | 320 | 376 | 245 | 2 | 4 | 1 |
| DBSPN016DD | 16 | 390 | 446 | 315 | 2 | 6 | 1 |
| DBSPN018DD | 18 | 425 | 481 | 350 | 2 | 6 | 1 |

MOUNTING HOLE DETAILS SUITABLE FOR M8 BOLT

Dimension Details TPN DB

IP 30 single door

BOX DEPTH TO BE FLUSHED INSIDE THE WALL

| CAT No. | No. of Ways | A | B | C | Top/Bottom Knock out | | Side Knock out | |
|------------|-------------|-----|-----|-----|----------------------|-----|----------------|-----|
| | | | | | Ø32 | Ø25 | Ø32 | Ø25 |
| DBTPE004SD | 4 | 317 | 375 | 252 | 2 | 4 | 1 | 2 |
| DBTPE006SD | 6 | 357 | 415 | 292 | 2 | 4 | 1 | 2 |
| DBTPN004SD | 4 | 357 | 415 | 292 | 2 | 4 | 1 | 2 |
| DBTPN006SD | 6 | 398 | 455 | 332 | 2 | 6 | 1 | 2 |
| DBTPN008SD | 8 | 462 | 520 | 387 | 2 | 8 | 1 | 2 |
| DBTPN012SD | 12 | 655 | 705 | 584 | 2 | 12 | 1 | 2 |
| DBTPN016SD | 16 | 793 | 850 | 725 | 2 | 14 | 1 | 2 |

MOUNTING HOLE DETAILS SUITABLE FOR M12 BOLT

IP 43 metal door

BOX DEPTH TO BE FLUSHED INSIDE THE WALL

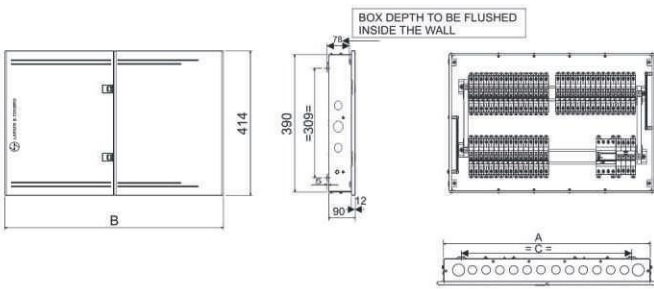
| CAT No. | No. of Ways | A | B | C | Top/Bottom Knock out | | Side Knock out | |
|------------|-------------|-----|-----|-----|----------------------|-----|----------------|-----|
| | | | | | Ø32 | Ø25 | Ø32 | Ø25 |
| DBTPE004DD | 4 | 317 | 375 | 252 | 2 | 4 | 1 | 2 |
| DBTPE006DD | 6 | 357 | 412 | 292 | 2 | 4 | 1 | 2 |
| DBTPN004DD | 4 | 357 | 412 | 292 | 2 | 4 | 1 | 2 |
| DBTPE006DD | 6 | 398 | 451 | 332 | 2 | 6 | 1 | 2 |
| DBTPN008DD | 8 | 462 | 517 | 387 | 2 | 8 | 1 | 2 |

MOUNTING HOLE DETAILS SUITABLE FOR M12 BOLT

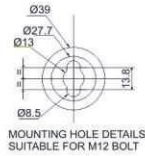
UNLESS OTHERWISE SPECIFIED DIMENSIONS ARE IN mm
TOLERANCE ON DIMENSIONS = ±2 mm

Dimension Details TPN DB

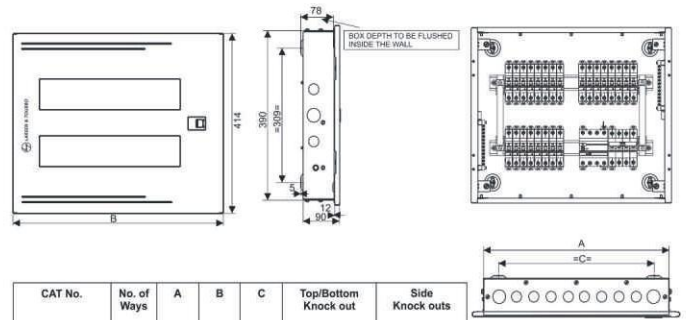
IP 43 metal door



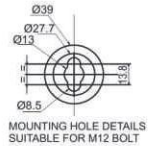
| CAT No. | No. of Ways | A | B | C | Top/Bottom Knock out | | Side Knock out | |
|------------|-------------|-----|-----|-----|----------------------|-----|----------------|-----|
| | | | | | Ø32 | Ø25 | Ø32 | Ø25 |
| DBTPN012DD | 12 | 655 | 712 | 584 | 2 | 12 | 1 | 2 |
| DBTPN016DD | 16 | 793 | 850 | 725 | 2 | 14 | 1 | 2 |



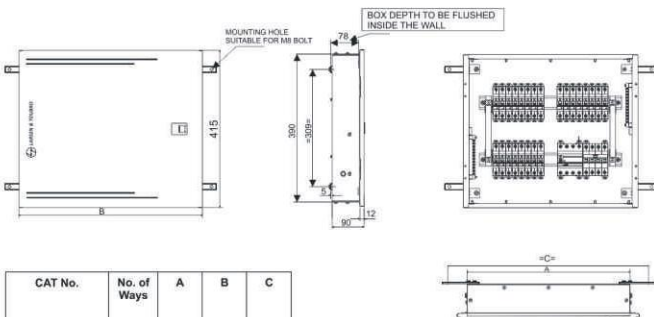
IP 43 glazed door



| CAT No. | No. of Ways | A | B | C | Top/Bottom Knock out | | Side Knock outs | |
|------------|-------------|-----|-----|-----|----------------------|-----|-----------------|-----|
| | | | | | Ø32 | Ø25 | Ø32 | Ø25 |
| DBTPE004GD | 4 | 317 | 375 | 252 | 2 | 4 | 1 | 2 |
| DBTPE006GD | 6 | 357 | 412 | 292 | 2 | 4 | 1 | 2 |
| DBTPN004GD | 4 | 357 | 412 | 292 | 2 | 4 | 1 | 2 |
| DBTPN006GD | 6 | 398 | 451 | 332 | 2 | 6 | 1 | 2 |
| DBTPN008GD | 8 | 462 | 517 | 387 | 2 | 8 | 1 | 2 |

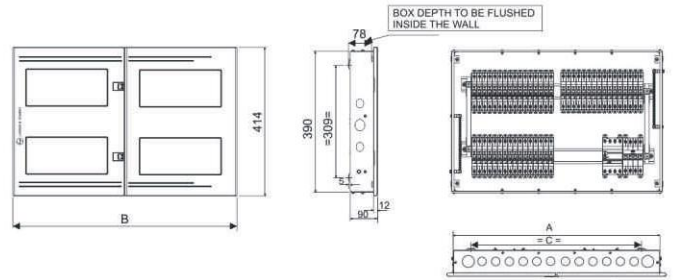


IP 54 metal door



| CAT No. | No. of Ways | A | B | C |
|------------|-------------|-----|-----|-----|
| DBTPE00454 | 4 | 317 | 375 | 427 |
| DBTPE00654 | 6 | 357 | 412 | 467 |
| DBTPN00454 | 4 | 357 | 412 | 467 |
| DBTPN00654 | 6 | 398 | 451 | 507 |
| DBTPN00854 | 8 | 462 | 517 | 571 |

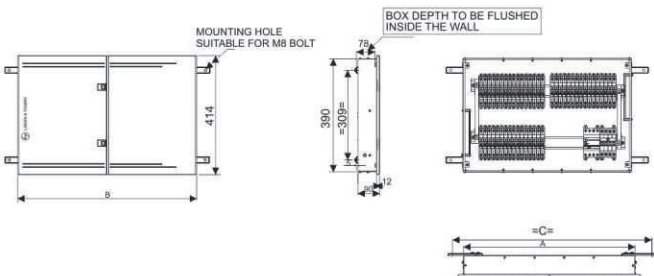
IP 43 glazed door



| CAT No. | No. of Ways | A | B | C | Top/Bottom Knock out | | Side Knock out | |
|------------|-------------|-----|-----|-----|----------------------|-----|----------------|-----|
| | | | | | Ø32 | Ø25 | Ø32 | Ø25 |
| DBTPN012GD | 12 | 655 | 712 | 584 | 2 | 12 | 1 | 2 |
| DBTPN016GD | 16 | 793 | 850 | 725 | 2 | 14 | 1 | 2 |



IP 54 metal door

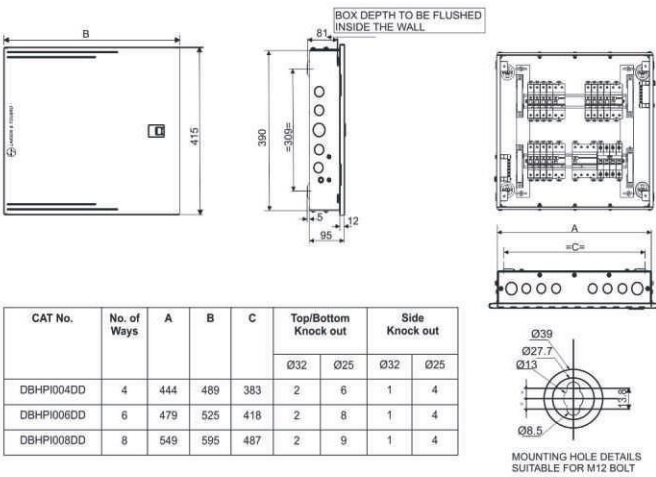


| CAT No. | No. of Ways | A | B | C |
|------------|-------------|-----|-----|-----|
| DBTPN01254 | 12 | 655 | 712 | 764 |
| DBTPN01654 | 16 | 793 | 850 | 906 |

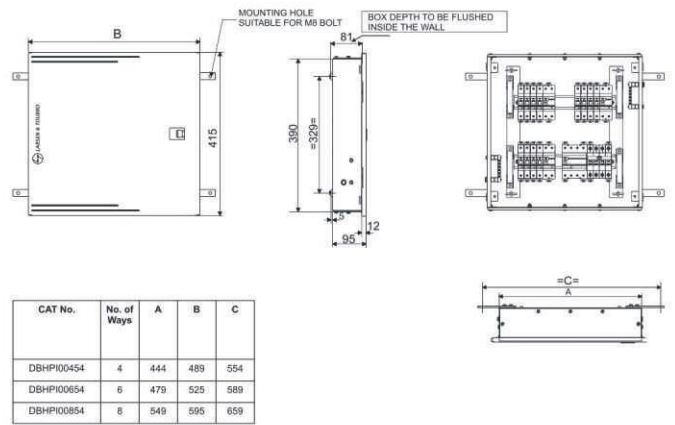
UNLESS OTHERWISE SPECIFIED DIMENSIONS ARE IN mm
TOLERANCE ON DIMENSIONS = ±2 mm

Dimension Details Horizontal PPI DB

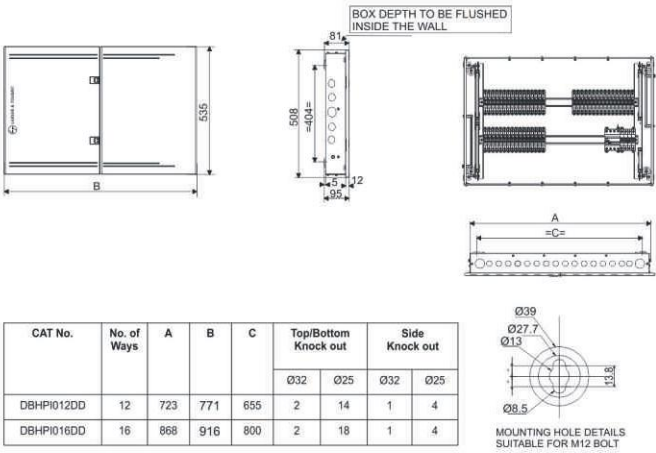
IP 43 metal door



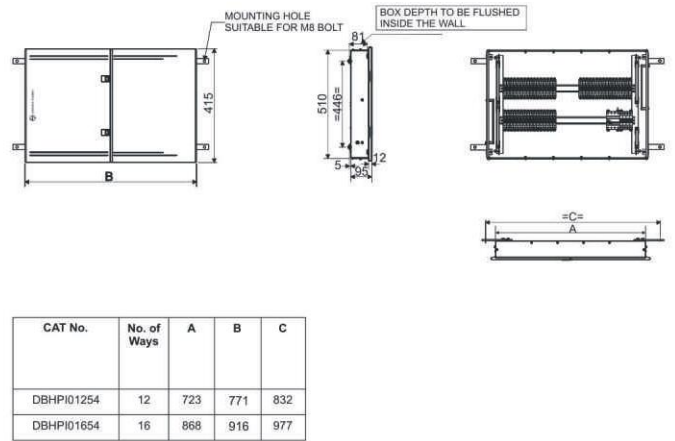
IP 54 metal door



IP 43 metal door

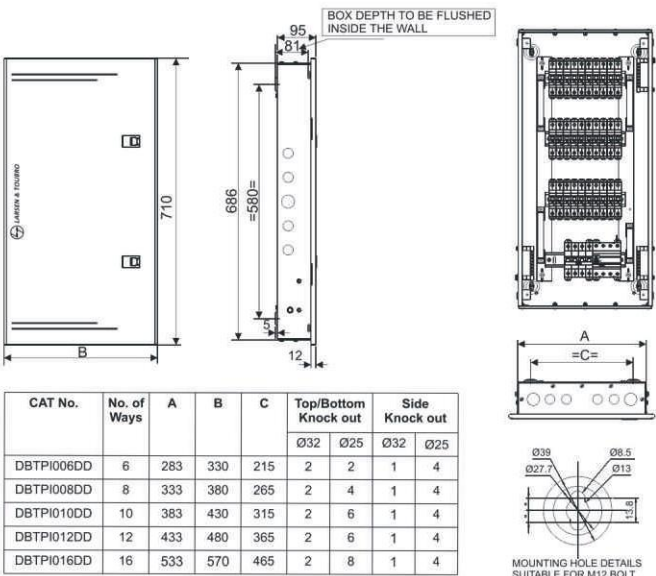


IP 54 metal door

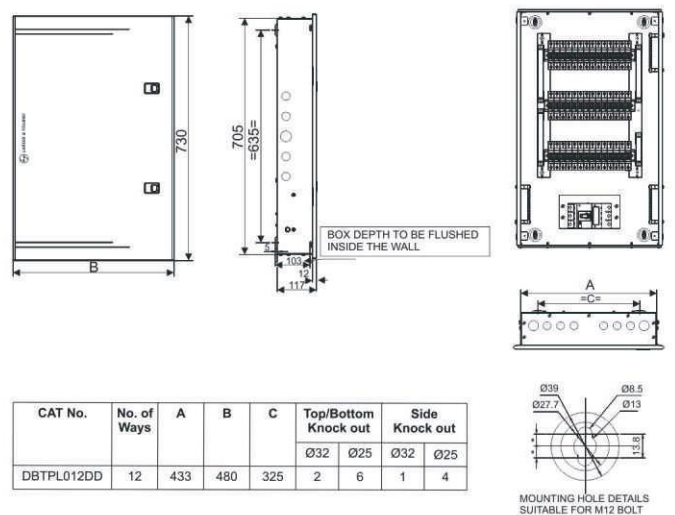


Dimension Details Tier PPI DB

IP 43 metal door



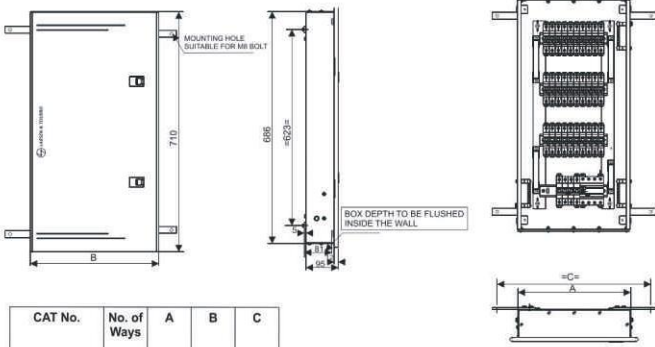
IP 43 metal door- MCCB incomer



UNLESS OTHERWISE SPECIFIED DIMENSIONS ARE IN mm
TOLERANCE ON DIMENSIONS = ±2 mm

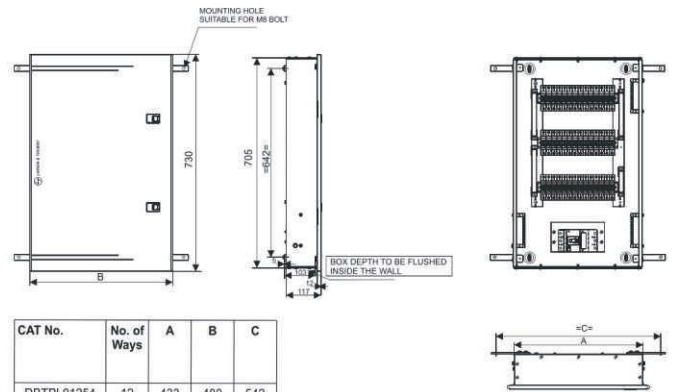
Dimension Details Tier PPI DB

IP 54 metal door



| CAT No. | No. of Ways | A | B | C |
|------------|-------------|-----|-----|-----|
| DBTPI00654 | 6 | 283 | 330 | 392 |
| DBTPI00854 | 8 | 333 | 380 | 442 |
| DBTPI01054 | 10 | 383 | 430 | 492 |
| DBTPI01254 | 12 | 433 | 480 | 542 |
| DBTPI01654 | 16 | 533 | 570 | 642 |

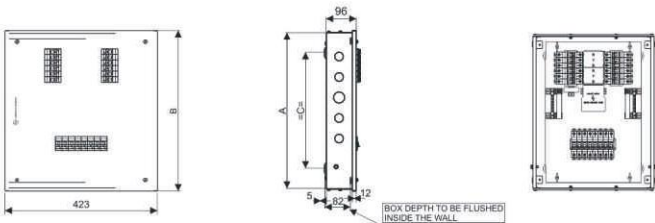
IP 54 metal door - MCCB incomer



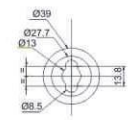
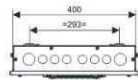
| CAT No. | No. of Ways | A | B | C |
|------------|-------------|-----|-----|-----|
| DBTPL01254 | 12 | 433 | 480 | 542 |

Dimension Details VTPN DB-MCB Incomer

IP 30 metal door

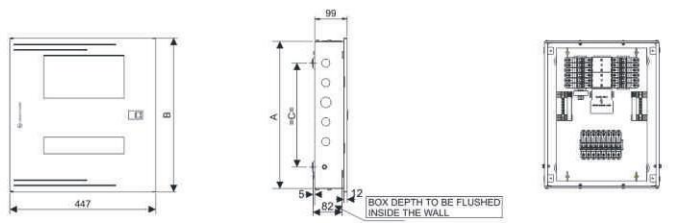


| CAT No. | No. of Ways | A | B | C | Top/Bottom Knock out | | Side Knock out | |
|------------|-------------|-----|-----|-----|----------------------|-----|----------------|-----|
| | | | | | Ø32 | Ø25 | Ø32 | Ø25 |
| DBVTM004SD | 4 | 505 | 517 | 373 | 2 | 6 | 1 | 4 |
| DBVTM006SD | 6 | 560 | 572 | 428 | 2 | 6 | 1 | 4 |
| DBVTM008SD | 8 | 615 | 627 | 483 | 2 | 6 | 1 | 4 |
| DBVTM012SD | 12 | 755 | 782 | 623 | 2 | 6 | 1 | 4 |
| DBVTM016SD | 16 | 926 | 953 | 793 | 2 | 6 | 1 | 4 |

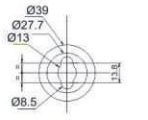
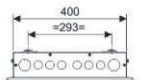


MOUNTING HOLE DETAILS SUITABLE FOR M12 BOLT

IP 43 glazed door

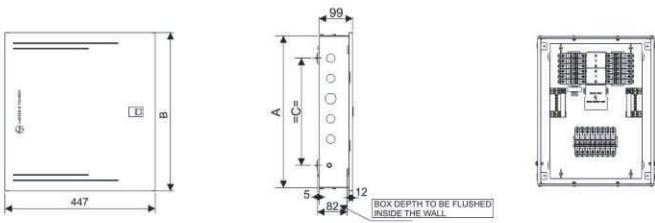


| CAT No. | No. of Ways | A | B | C | Top/Bottom Knock out | | Side Knock out | |
|------------|-------------|-----|-----|-----|----------------------|-----|----------------|-----|
| | | | | | Ø32 | Ø25 | Ø32 | Ø25 |
| DBVTM004GD | 4 | 509 | 533 | 373 | 2 | 6 | 1 | 4 |
| DBVTM006GD | 6 | 564 | 588 | 428 | 2 | 6 | 1 | 4 |
| DBVTM008GD | 8 | 619 | 643 | 483 | 2 | 6 | 1 | 4 |
| DBVTM012GD | 12 | 759 | 783 | 623 | 2 | 6 | 1 | 4 |
| DBVTM016GD | 16 | 926 | 954 | 793 | 2 | 6 | 1 | 4 |

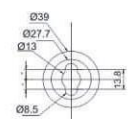
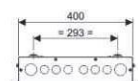


MOUNTING HOLE DETAILS SUITABLE FOR M12 BOLT

IP 43 metal door

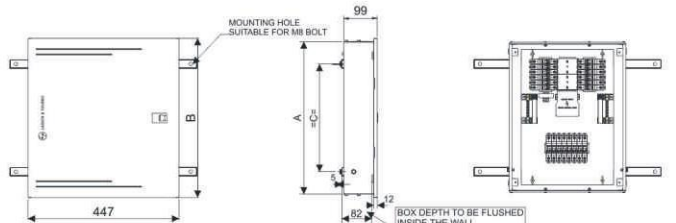


| CAT No. | No. of Ways | A | B | C | Top/Bottom Knock out | | Side Knock out | |
|------------|-------------|-----|-----|-----|----------------------|-----|----------------|-----|
| | | | | | Ø32 | Ø25 | Ø32 | Ø25 |
| DBVTM004DD | 4 | 509 | 533 | 373 | 2 | 6 | 1 | 4 |
| DBVTM006DD | 6 | 564 | 588 | 428 | 2 | 6 | 1 | 4 |
| DBVTM008DD | 8 | 619 | 643 | 483 | 2 | 6 | 1 | 4 |
| DBVTM012DD | 12 | 759 | 783 | 623 | 2 | 6 | 1 | 4 |
| DBVTM016DD | 16 | 926 | 954 | 793 | 2 | 6 | 1 | 4 |

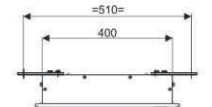


MOUNTING HOLE DETAILS SUITABLE FOR M12 BOLT

IP 54 metal door



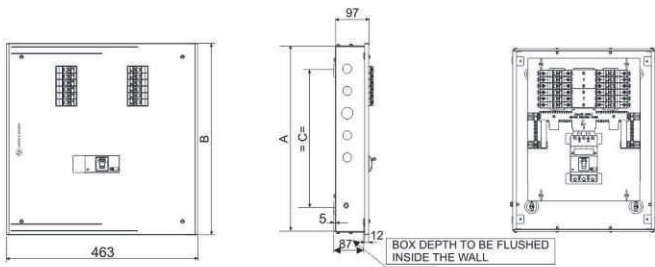
| CAT No. | No. of Ways | A | B | C |
|------------|-------------|-----|-----|-----|
| DBVTM00454 | 4 | 509 | 533 | 373 |
| DBVTM00654 | 6 | 564 | 588 | 428 |
| DBVTM00854 | 8 | 619 | 643 | 483 |
| DBVTM01254 | 12 | 759 | 783 | 623 |
| DBVTM01654 | 16 | 926 | 954 | 793 |



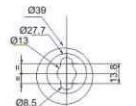
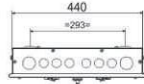
UNLESS OTHERWISE SPECIFIED DIMENSIONS ARE IN mm
TOLERANCE ON DIMENSIONS = ±2 mm

Dimension Details VTPN DB-125A MCCB Incomer

IP 30 metal door

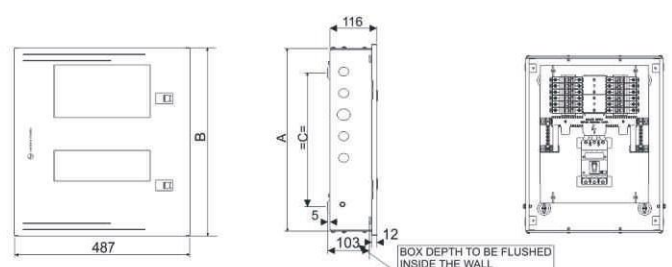


| CAT No. | No. of Ways | A | B | C | Top/Bottom Knock out | | Side Knock out | |
|------------|-------------|-----|-----|-----|----------------------|-----|----------------|-----|
| | | | | | Ø32 | Ø25 | Ø32 | Ø25 |
| DBVTL004SD | 4 | 505 | 518 | 373 | 2 | 6 | 1 | 4 |
| DBVTL006SD | 6 | 560 | 573 | 428 | 2 | 6 | 1 | 4 |
| DBVTL008SD | 8 | 615 | 628 | 483 | 2 | 6 | 1 | 4 |
| DBVTL012SD | 12 | 725 | 738 | 593 | 2 | 6 | 1 | 4 |
| DBVTL016SD | 16 | 851 | 863 | 718 | 2 | 6 | 1 | 4 |

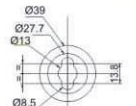
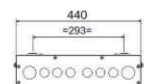


MOUNTING HOLE DETAILS SUITABLE FOR M12 BOLT

IP 43 glazed door

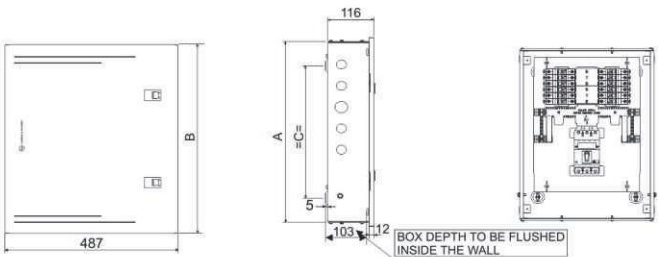


| CAT No. | No. of Ways | A | B | C | Top/Bottom Knock out | | Side Knock out | |
|------------|-------------|-----|-----|-----|----------------------|-----|----------------|-----|
| | | | | | Ø32 | Ø25 | Ø32 | Ø25 |
| DBVTL004GD | 4 | 509 | 533 | 373 | 2 | 6 | 1 | 4 |
| DBVTL006GD | 6 | 564 | 588 | 428 | 2 | 6 | 1 | 4 |
| DBVTL008GD | 8 | 619 | 643 | 483 | 2 | 6 | 1 | 4 |
| DBVTL012GD | 12 | 729 | 753 | 593 | 2 | 6 | 1 | 4 |
| DBVTL016GD | 16 | 851 | 879 | 718 | 2 | 6 | 1 | 4 |

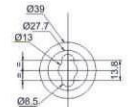
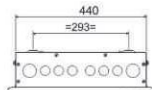


MOUNTING HOLE DETAILS SUITABLE FOR M12 BOLT

IP 43 metal door

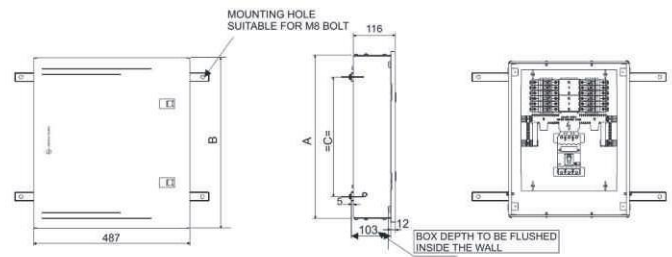


| CAT No. | No. of Ways | A | B | C | Top/Bottom Knock out | | Side Knock out | |
|------------|-------------|-----|-----|-----|----------------------|-----|----------------|-----|
| | | | | | Ø32 | Ø25 | Ø32 | Ø25 |
| DBVTL004DD | 4 | 509 | 533 | 373 | 2 | 6 | 1 | 4 |
| DBVTL006DD | 6 | 564 | 588 | 428 | 2 | 6 | 1 | 4 |
| DBVTL008DD | 8 | 619 | 643 | 483 | 2 | 6 | 1 | 4 |
| DBVTL012DD | 12 | 729 | 753 | 593 | 2 | 6 | 1 | 4 |
| DBVTL016DD | 16 | 851 | 879 | 718 | 2 | 6 | 1 | 4 |

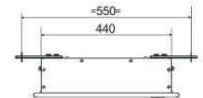


MOUNTING HOLE DETAILS SUITABLE FOR M12 BOLT

IP 54 metal door

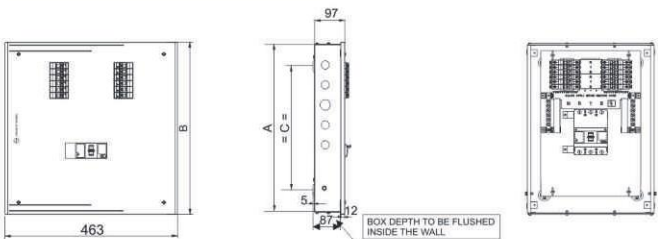


| CAT No. | No. of Ways | A | B | C |
|------------|-------------|-----|-----|-----|
| DBVTL00454 | 4 | 509 | 533 | 380 |
| DBVTL00654 | 6 | 564 | 588 | 435 |
| DBVTL00854 | 8 | 619 | 643 | 490 |
| DBVTL01254 | 12 | 729 | 753 | 600 |
| DBVTL01654 | 16 | 851 | 879 | 725 |

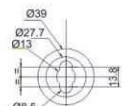
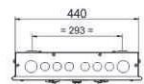


Dimension Details VTPN DB-250A MCCB Incomer

IP 30 metal door

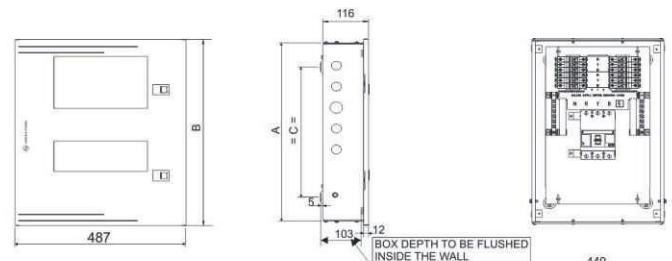


| CAT No. | No. of Ways | A | B | C | Top/Bottom Knock out | | Side Knock out | |
|------------|-------------|------|------|-----|----------------------|-----|----------------|-----|
| | | | | | Ø32 | Ø25 | Ø32 | Ø25 |
| DBVTH004SD | 4 | 615 | 628 | 483 | 2 | 6 | 1 | 4 |
| DBVTH006SD | 6 | 670 | 683 | 538 | 2 | 6 | 1 | 4 |
| DBVTH008SD | 8 | 725 | 738 | 593 | 2 | 6 | 1 | 4 |
| DBVTH012SD | 12 | 851 | 863 | 718 | 2 | 6 | 1 | 4 |
| DBVTH016SD | 16 | 1016 | 1028 | 883 | 2 | 6 | 1 | 4 |

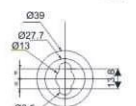
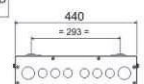


MOUNTING HOLE DETAILS SUITABLE FOR M12 BOLT

IP 43 glazed door



| CAT No. | No. of Ways | A | B | C | Top/Bottom Knock out | | Side Knock out | |
|------------|-------------|------|------|-----|----------------------|-----|----------------|-----|
| | | | | | Ø32 | Ø25 | Ø32 | Ø25 |
| DBVTH004GD | 4 | 615 | 643 | 483 | 2 | 6 | 1 | 4 |
| DBVTH006GD | 6 | 670 | 698 | 538 | 2 | 6 | 1 | 4 |
| DBVTH008GD | 8 | 725 | 753 | 593 | 2 | 6 | 1 | 4 |
| DBVTH012GD | 12 | 851 | 879 | 718 | 2 | 6 | 1 | 4 |
| DBVTH016GD | 16 | 1016 | 1044 | 883 | 2 | 6 | 1 | 4 |

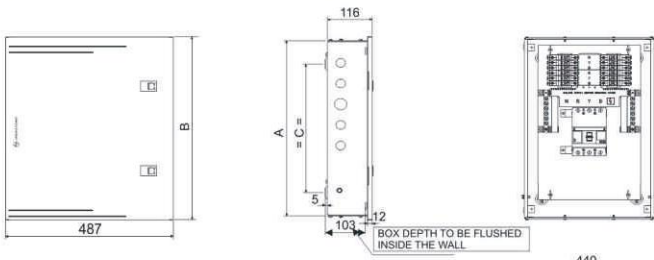


MOUNTING HOLE DETAILS SUITABLE FOR M12 BOLT

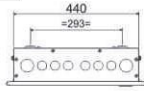
UNLESS OTHERWISE SPECIFIED DIMENSIONS ARE IN mm
TOLERANCE ON DIMENSIONS = ±2 mm

Dimension Details VTPN DB-250A MCCB Incomer

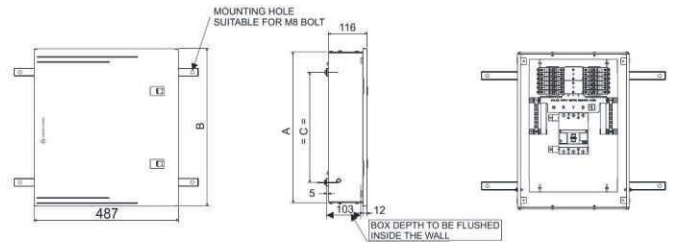
IP 43 metal door



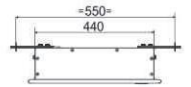
| CAT No. | No. of Ways | A | B | C | Top/Bottom Knock out | | Side Knock out | |
|------------|-------------|------|------|-----|----------------------|-----|----------------|-----|
| | | | | | Ø32 | Ø25 | Ø32 | Ø25 |
| DBVTH004DD | 4 | 615 | 643 | 483 | 2 | 6 | 1 | 4 |
| DBVTH006DD | 6 | 670 | 698 | 538 | 2 | 6 | 1 | 4 |
| DBVTH008DD | 8 | 725 | 753 | 593 | 2 | 6 | 1 | 4 |
| DBVTH012DD | 12 | 851 | 879 | 718 | 2 | 6 | 1 | 4 |
| DBVTH016DD | 16 | 1016 | 1044 | 883 | 2 | 6 | 1 | 4 |



IP 54 metal door

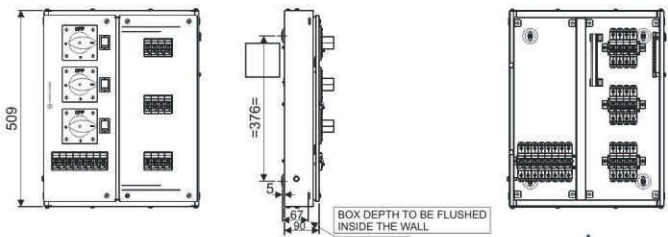


| CAT No. | No. of Ways | A | B | C |
|------------|-------------|------|------|-----|
| DBVTH00454 | 4 | 615 | 643 | 490 |
| DBVTH00654 | 6 | 670 | 698 | 545 |
| DBVTH00854 | 8 | 725 | 753 | 600 |
| DBVTH01254 | 12 | 851 | 879 | 725 |
| DBVTH01654 | 16 | 1016 | 1044 | 890 |

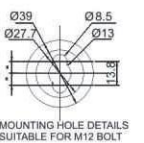
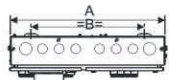


Dimension Details Phase Selector DB

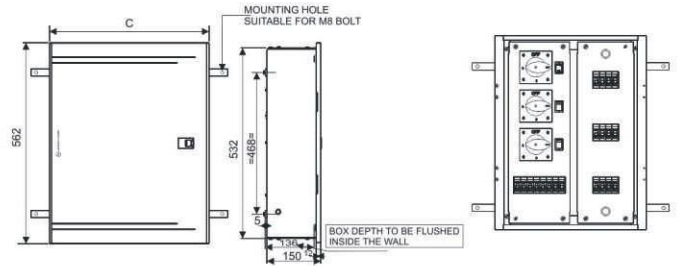
IP 30 metal door



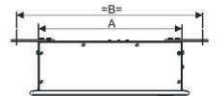
| CAT No. | No. of Ways | A | B | Top/Bottom Knock out | |
|------------|-------------|-----|-----|----------------------|-----|
| | | | | Ø32 | Ø25 |
| DBPSR004SD | 4 | 400 | 293 | 2 | 6 |
| DBPSR006SD | 6 | 435 | 328 | 2 | 6 |
| DBPSR008SD | 8 | 470 | 363 | 2 | 8 |
| DBPSR010SD | 10 | 505 | 398 | 2 | 8 |
| DBPSR012SD | 12 | 540 | 433 | 2 | 10 |



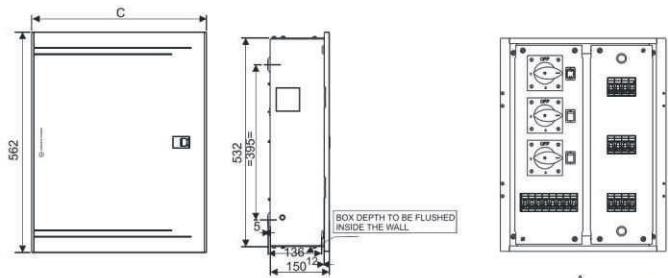
IP 54 metal door



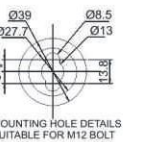
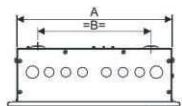
| CAT No. | No. of Ways | A | B | C |
|------------|-------------|-----|-----|-----|
| DBPSR00454 | 4 | 400 | 510 | 445 |
| DBPSR00654 | 6 | 435 | 545 | 480 |
| DBPSR00854 | 8 | 470 | 580 | 515 |
| DBPSR01054 | 10 | 505 | 615 | 550 |
| DBPSR01254 | 12 | 540 | 650 | 585 |



IP 43 metal door



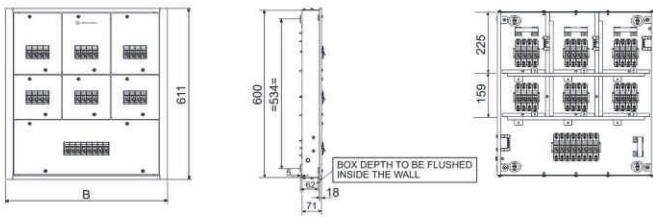
| CAT No. | No. of Ways | A | B | C | Top/Bottom Knock out | |
|------------|-------------|-----|-----|-----|----------------------|-----|
| | | | | | Ø32 | Ø25 |
| DBPSR004DD | 4 | 400 | 294 | 445 | 2 | 6 |
| DBPSR006DD | 6 | 435 | 329 | 480 | 2 | 6 |
| DBPSR008DD | 8 | 470 | 364 | 515 | 2 | 8 |
| DBPSR010DD | 10 | 505 | 399 | 550 | 2 | 8 |
| DBPSR012DD | 12 | 540 | 434 | 585 | 2 | 10 |



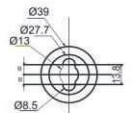
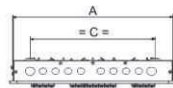
UNLESS OTHERWISE SPECIFIED DIMENSIONS ARE IN mm
TOLERANCE ON DIMENSIONS = ±2 mm

Dimension Details Phase Segregated DB-MCB Incomer

IP 30 metal door



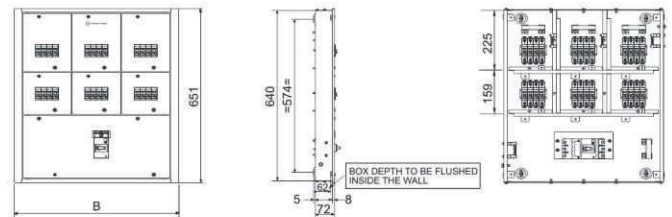
| CAT No. | No. of Ways | A | B | C | Top/Bottom Knock out | |
|------------|-------------|-----|-----|-----|----------------------|-----|
| | | | | | Ø32 | Ø25 |
| DBPSG004SD | 4 | 491 | 513 | 384 | 2 | 8 |
| DBPSG006SD | 6 | 596 | 618 | 489 | 2 | 10 |
| DBPSG008SD | 8 | 701 | 723 | 594 | 2 | 12 |
| DBPSG012SD | 12 | 911 | 933 | 804 | 2 | 18 |



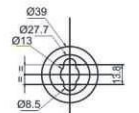
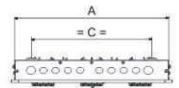
MOUNTING HOLE DETAILS SUITABLE FOR M12 BOLT

Dimension Details Phase Segregated DB-MCCB Incomer

IP 30 metal door

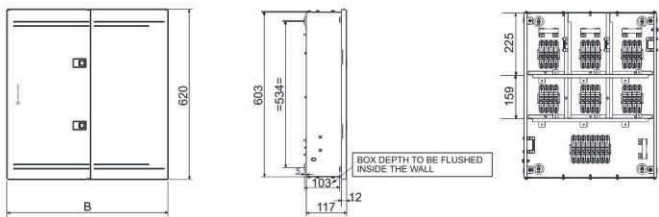


| CAT No. | No. of Ways | A | B | C | Top/Bottom Knock out | |
|------------|-------------|-----|-----|-----|----------------------|-----|
| | | | | | Ø32 | Ø25 |
| DBPGL004SD | 4 | 491 | 513 | 384 | 2 | 8 |
| DBPGL006SD | 6 | 596 | 618 | 489 | 2 | 10 |
| DBPGL008SD | 8 | 701 | 723 | 594 | 2 | 12 |
| DBPGL012SD | 12 | 911 | 933 | 804 | 2 | 18 |

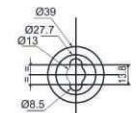
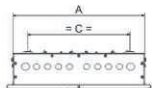


MOUNTING HOLE DETAILS SUITABLE FOR M12 BOLT

IP 43 metal door

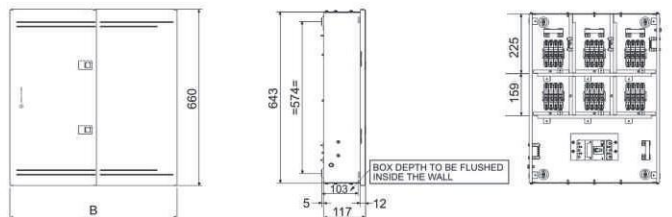


| CAT No. | No. of Ways | A | B | C | Top/Bottom Knock out | |
|------------|-------------|-----|-----|-----|----------------------|-----|
| | | | | | Ø32 | Ø25 |
| DBPSG004DD | 4 | 491 | 540 | 384 | 2 | 8 |
| DBPSG006DD | 6 | 596 | 646 | 489 | 2 | 10 |
| DBPSG008DD | 8 | 701 | 751 | 594 | 2 | 12 |
| DBPSG012DD | 12 | 911 | 961 | 804 | 2 | 18 |

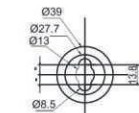
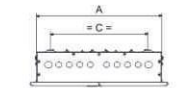


MOUNTING HOLE DETAILS SUITABLE FOR M12 BOLT

IP 43 metal door

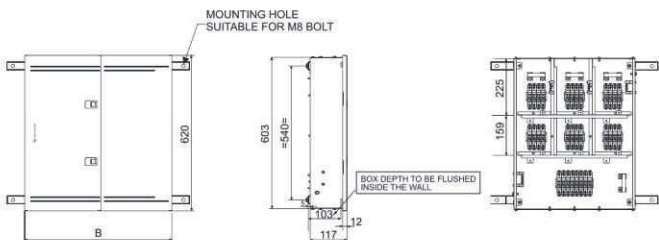


| CAT No. | No. of Ways | A | B | C | Top/Bottom Knock out | |
|------------|-------------|-----|-----|-----|----------------------|-----|
| | | | | | Ø32 | Ø25 |
| DBPGL004DD | 4 | 491 | 541 | 384 | 2 | 8 |
| DBPGL006DD | 6 | 596 | 646 | 489 | 2 | 10 |
| DBPGL008DD | 8 | 701 | 751 | 594 | 2 | 12 |
| DBPGL012DD | 12 | 911 | 961 | 804 | 2 | 18 |

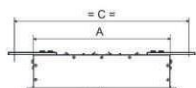


MOUNTING HOLE DETAILS SUITABLE FOR M12 BOLT

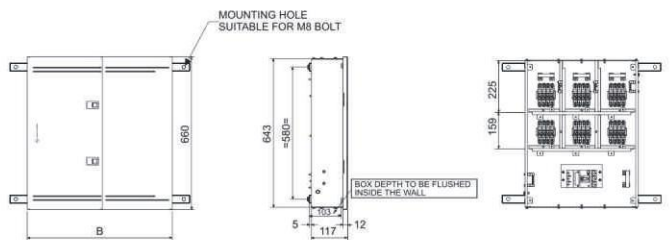
IP 54 metal door



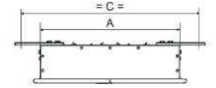
| CAT No. | No. of Ways | A | B | C |
|------------|-------------|-----|-----|------|
| DBPSG00454 | 4 | 491 | 540 | 601 |
| DBPSG00654 | 6 | 596 | 646 | 706 |
| DBPSG00854 | 8 | 701 | 751 | 811 |
| DBPSG01254 | 12 | 911 | 961 | 1021 |



IP 54 metal door



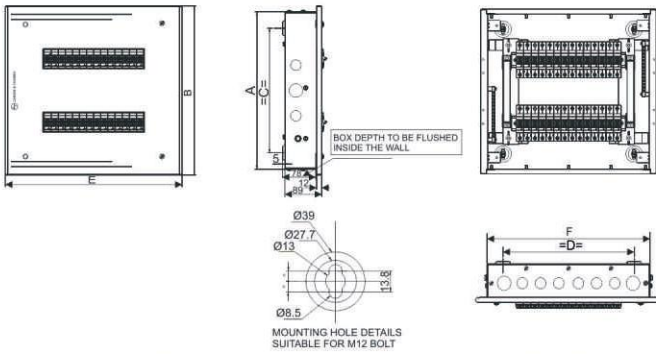
| CAT No. | No. of Ways | A | B | C |
|------------|-------------|-----|-----|------|
| DBPGL00454 | 4 | 491 | 541 | 601 |
| DBPGL00654 | 6 | 596 | 646 | 706 |
| DBPGL00854 | 8 | 701 | 751 | 811 |
| DBPGL01254 | 12 | 911 | 961 | 1021 |



UNLESS OTHERWISE SPECIFIED DIMENSIONS ARE IN mm
TOLERANCE ON DIMENSIONS = ±2 mm

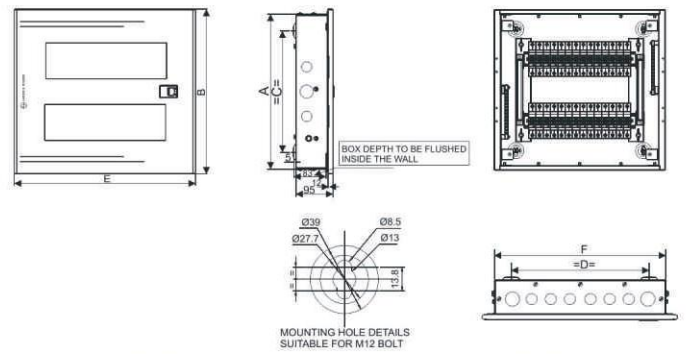
Dimension Details Flexi / Row DB

IP 30 metal door



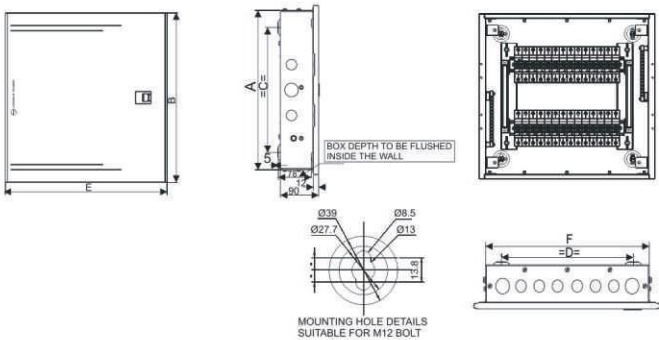
| CAT No. | No. of Rows | No. of Mods/ Row | A | B | C | D | E | F | Top/Bottom Knock out | | Side Knock out | |
|------------|-------------|------------------|-----|-----|-----|-----|-----|-----|----------------------|-----|----------------|-----|
| | | | | | | | | | Ø32 | Ø25 | Ø32 | Ø25 |
| DBROW228SD | 2 | 14 | 372 | 400 | 295 | 310 | 440 | 385 | 2 | 6 | 1 | 2 |
| DBROW342SD | 3 | 14 | 552 | 580 | 475 | 310 | 440 | 385 | 2 | 6 | 1 | 4 |
| DBROW456SD | 4 | 14 | 682 | 710 | 605 | 310 | 440 | 385 | 2 | 6 | 1 | 4 |
| DBROW464SD | 4 | 16 | 682 | 710 | 605 | 350 | 480 | 425 | 2 | 6 | 1 | 4 |

IP 43 glazed door



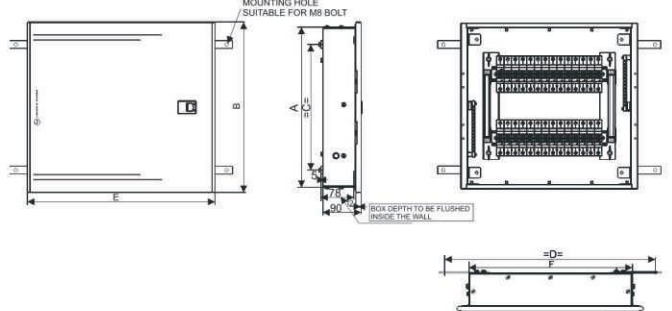
| CAT No. | No. of Rows | No. of Mods/ Row | A | B | C | D | E | F | Top/Bottom Knock out | | Side Knock out | |
|------------|-------------|------------------|-----|-----|-----|-----|-----|-----|----------------------|-----|----------------|-----|
| | | | | | | | | | Ø32 | Ø25 | Ø32 | Ø25 |
| DBROW228GD | 2 | 14 | 376 | 400 | 295 | 310 | 440 | 385 | 2 | 6 | 1 | 2 |
| DBROW342GD | 3 | 14 | 556 | 580 | 475 | 310 | 440 | 385 | 2 | 6 | 1 | 4 |
| DBROW456GD | 4 | 14 | 686 | 710 | 605 | 310 | 440 | 385 | 2 | 6 | 1 | 4 |
| DBROW464GD | 4 | 16 | 686 | 710 | 605 | 350 | 480 | 425 | 2 | 6 | 1 | 4 |

IP 43 metal door



| CAT No. | No. of Rows | No. of Mods/ Row | A | B | C | D | E | F | Top/Bottom Knock out | | Side Knock out | |
|------------|-------------|------------------|-----|-----|-----|-----|-----|-----|----------------------|-----|----------------|-----|
| | | | | | | | | | Ø32 | Ø25 | Ø32 | Ø25 |
| DBROW228DD | 2 | 14 | 376 | 400 | 295 | 310 | 440 | 385 | 2 | 6 | 1 | 2 |
| DBROW342DD | 3 | 14 | 556 | 580 | 475 | 310 | 440 | 385 | 2 | 6 | 1 | 4 |
| DBROW456DD | 4 | 14 | 686 | 710 | 605 | 310 | 440 | 385 | 2 | 6 | 1 | 4 |
| DBROW464DD | 4 | 16 | 686 | 710 | 605 | 350 | 480 | 425 | 2 | 6 | 1 | 4 |

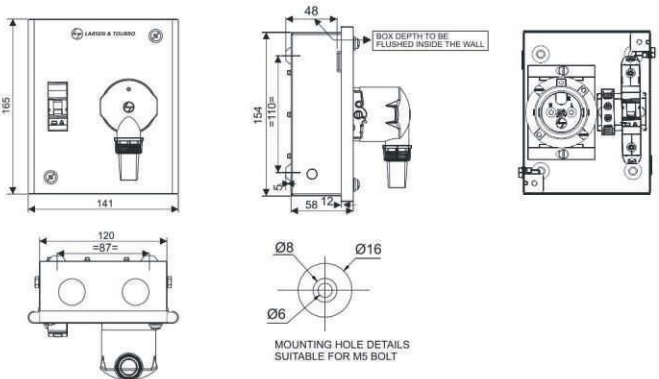
IP 54 metal door



| CAT No. | No. of Rows | No. of Mods/ Row | A | B | C | D | E | F |
|------------|-------------|------------------|-----|-----|-----|-----|-----|-----|
| DBROW22854 | 2 | 14 | 376 | 400 | 295 | 494 | 440 | 385 |
| DBROW34254 | 3 | 14 | 556 | 580 | 493 | 494 | 440 | 385 |
| DBROW45654 | 4 | 14 | 686 | 710 | 623 | 494 | 440 | 385 |
| DBROW46454 | 4 | 16 | 686 | 710 | 623 | 534 | 480 | 425 |

Dimension Details Metal Plug & Socket DB

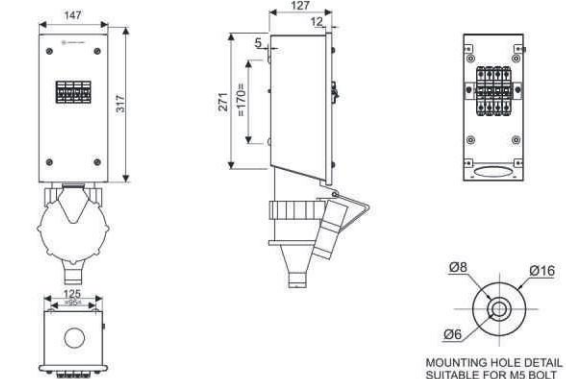
Metal Plug & Socket DB



| CAT No. | Description | Top/Bottom Knock out |
|------------|---------------------|----------------------|
| | | Ø25 |
| DBMPS110SD | 10A, 2Pin+SC - 1MOD | 2 |
| DBMPS120SD | 20A, 2Pin+SC - 1MOD | 2 |
| DBMPS220SD | 20A, 2Pin+SC - 2MOD | 2 |

SC - Scraping Earth

Metal Plug & Socket DB



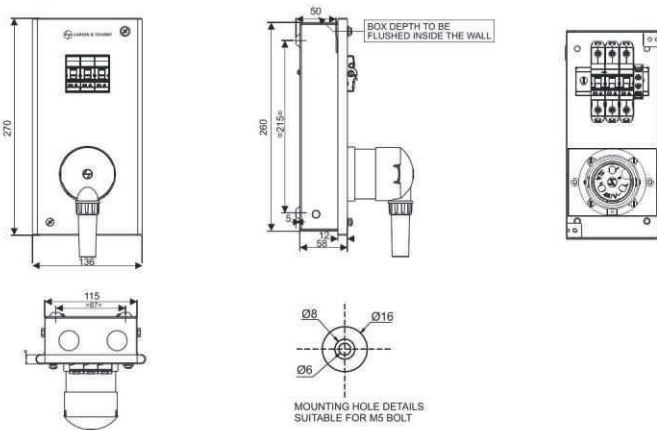
| CAT No. | Description | Top/Bottom Knock out |
|------------|---------------------|----------------------|
| | | Ø25 |
| DBMPS463SD | 63A, 5Pin+SC - 4MOD | 1 |

SC - Scraping Earth

UNLESS OTHERWISE SPECIFIED DIMENSIONS ARE IN mm
TOLERANCE ON DIMENSIONS = ±2 mm

Dimension Details Metal Plug & Socket DB

Metal Plug & Socket DB

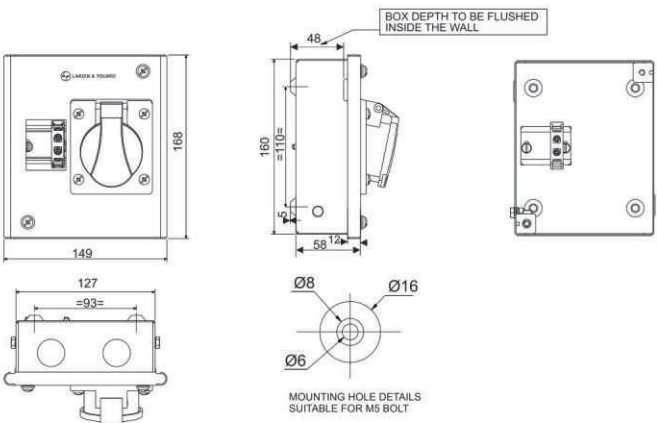


| CAT No. | Description | Top/Bottom Knock out |
|------------|---------------------|----------------------|
| | | Ø25 |
| DBMPS320SD | 20A, 3Pin+SC - 3MOD | 2 |
| DBMPS332SD | 32A, 3Pin+SC - 3MOD | 2 |
| DBMPS432SD | 32A, 3Pin+SC - 4MOD | 2 |

SC - Scraping Earth

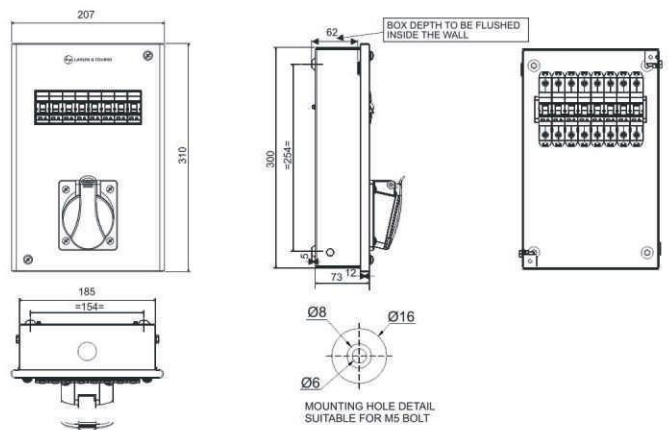
Dimension Details Plastic Plug & Socket DB

Plastic Plug & Socket DB



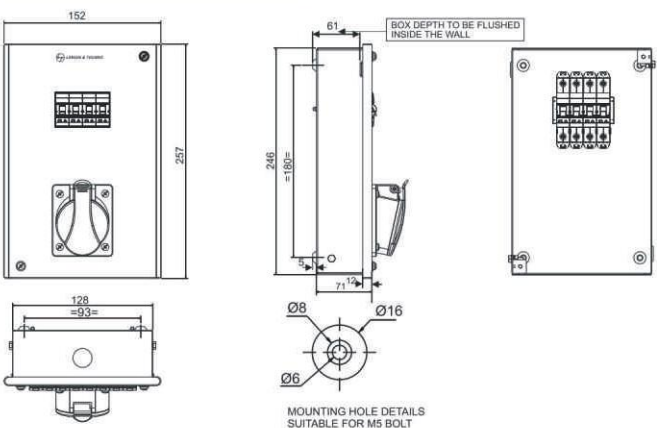
| CAT No. | Description | Top/Bottom Knock out |
|------------|------------------|----------------------|
| | | Ø25 |
| DBPPS316SD | 16A, 3Pin - 2MOD | 2 |

Plastic Plug & Socket DB



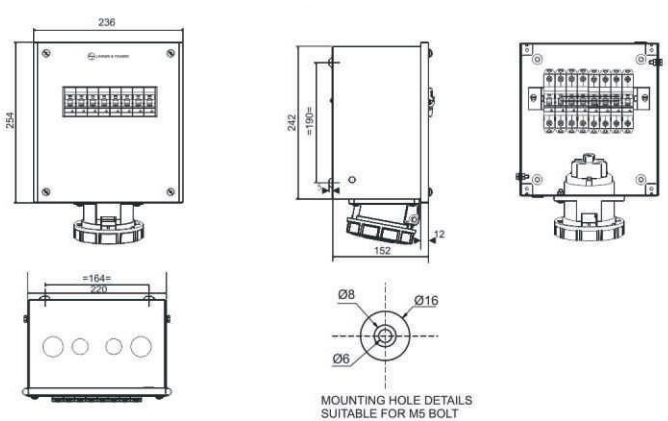
| CAT No. | Description | Top/Bottom Knock out |
|------------|------------------|----------------------|
| | | Ø25 |
| DBPPS532SD | 32A, 5Pin - 8MOD | 2 |

Plastic Plug & Socket DB



| CAT No. | Description | Top/Bottom Knock out |
|------------|------------------|----------------------|
| | | Ø25 |
| DBPPS332SD | 32A, 3Pin - 4MOD | 2 |

Plastic Plug & Socket DB

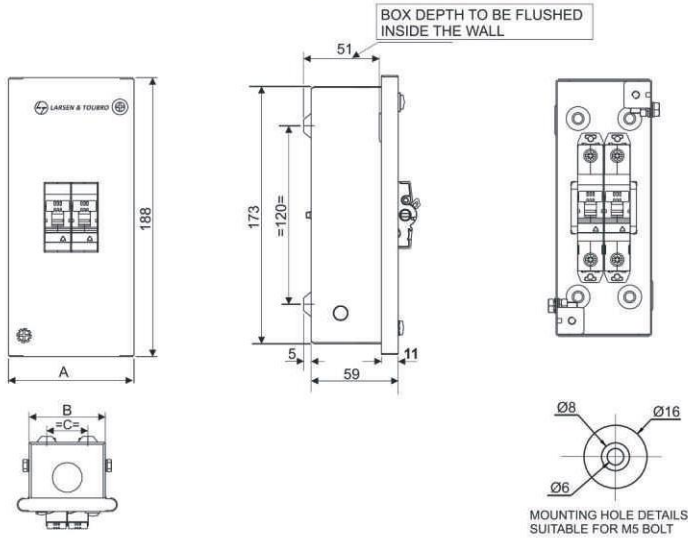


| CAT No. | Description | Top/Bottom Knock out | |
|------------|------------------|----------------------|-----|
| | | Ø32 | Ø25 |
| DBPPS563SD | 63A, 5Pin - 8MOD | 2 | 2 |

UNLESS OTHERWISE SPECIFIED DIMENSIONS ARE IN mm
TOLERANCE ON DIMENSIONS = ±2 mm

Dimension Details Enclosures

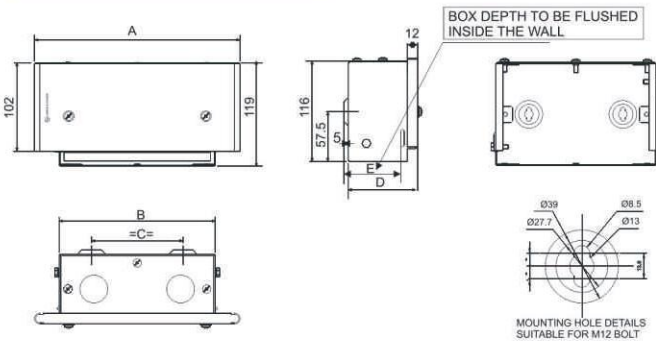
Enclosures



| CAT No. | No. of Ways | A | B | C | Top/Bottom Knock out | |
|------------|-------------|-----|-----|----|----------------------|--|
| | | | | | Ø25 | |
| DBENC002SD | 2 | 85 | 65 | 35 | 1 | |
| DBENC003SD | 3 | 95 | 75 | 45 | 1 | |
| DBENC004SD | 4 | 105 | 85 | 55 | 1 | |
| DBENC006SD | 6 | 145 | 125 | 95 | 2 | |

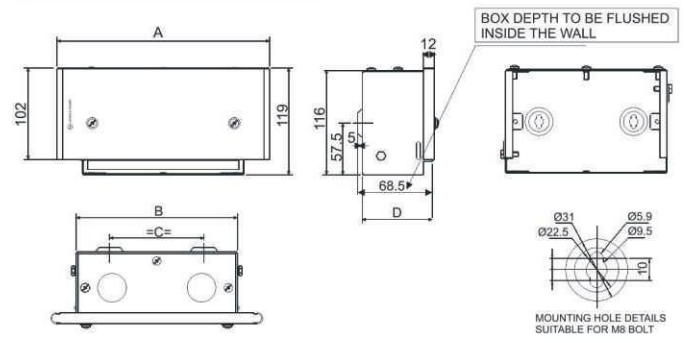
Dimension Details Cable end box

Cable end box



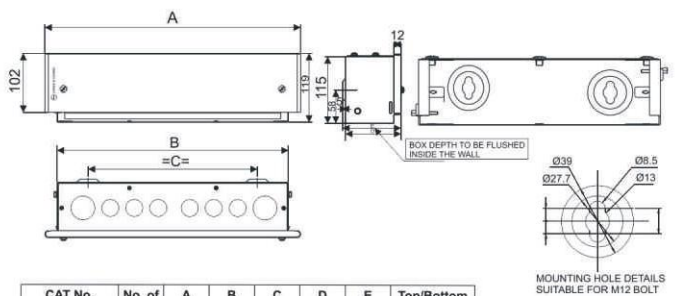
| CAT No. | No. of Ways | A | B | C | D | E | Top/Bottom Knock out | |
|------------|-------------|-----|-----|-----|-----|-----|----------------------|-----|
| | | | | | | | Ø32 | Ø25 |
| DBTPE004CB | 4 | 375 | 317 | 252 | 90 | 75 | 2 | 4 |
| DBTPE006CB | 6 | 412 | 357 | 292 | 90 | 75 | 2 | 4 |
| DBTPN004CB | 4 | 412 | 357 | 292 | 90 | 75 | 2 | 4 |
| DBTPN006CB | 6 | 451 | 398 | 332 | 90 | 75 | 2 | 6 |
| DBTPN008CB | 8 | 517 | 462 | 387 | 90 | 75 | 2 | 8 |
| DBTPN012CB | 12 | 710 | 655 | 584 | 90 | 75 | 2 | 12 |
| DBTPN016CB | 16 | 849 | 796 | 725 | 90 | 75 | 2 | 14 |
| DBHPI004CB | 4 | 489 | 444 | 383 | 94 | 79 | 2 | 6 |
| DBHPI006CB | 6 | 525 | 479 | 418 | 94 | 79 | 2 | 8 |
| DBHPI008CB | 8 | 595 | 549 | 487 | 94 | 79 | 2 | 9 |
| DBHPI012CB | 12 | 771 | 723 | 655 | 96 | 81 | 2 | 14 |
| DBHPI016CB | 16 | 916 | 868 | 800 | 96 | 81 | 2 | 18 |
| DBTPI006CB | 6 | 329 | 282 | 215 | 94 | 79 | 2 | 2 |
| DBTPI008CB | 8 | 379 | 332 | 265 | 94 | 79 | 2 | 4 |
| DBTPI010CB | 10 | 429 | 382 | 315 | 94 | 79 | 2 | 6 |
| DBTPI012CB | 12 | 479 | 432 | 365 | 94 | 79 | 2 | 6 |
| DBTPI016CB | 16 | 580 | 533 | 465 | 94 | 79 | 2 | 8 |
| DBTPL012CB | 12 | 480 | 433 | 325 | 117 | 102 | 2 | 6 |
| DBROWX14CB | 14 | 440 | 385 | 310 | 90 | 75 | 2 | 6 |
| DBROWX16CB | 16 | 480 | 425 | 350 | 90 | 75 | 2 | 6 |
| DBPSG004CB | 4 | 540 | 491 | 384 | 117 | 102 | 2 | 8 |
| DBPSG006CB | 6 | 646 | 596 | 489 | 117 | 102 | 2 | 10 |
| DBPSG008CB | 8 | 751 | 701 | 594 | 117 | 102 | 2 | 12 |
| DBPSG012CB | 12 | 961 | 911 | 804 | 117 | 102 | 2 | 18 |
| DBPSR004CB | 4 | 445 | 400 | 294 | 151 | 136 | 2 | 6 |
| DBPSR006CB | 6 | 480 | 435 | 329 | 151 | 136 | 2 | 6 |
| DBPSR008CB | 8 | 515 | 470 | 364 | 151 | 136 | 2 | 8 |
| DBPSR010CB | 10 | 550 | 505 | 399 | 151 | 136 | 2 | 8 |
| DBPSR012CB | 12 | 585 | 540 | 434 | 151 | 136 | 2 | 10 |

Cable end box



| CAT No. | No. of Ways | A | B | C | D | Top/Bottom Knock out | |
|------------|-------------|-----|-----|-----|----|----------------------|-----|
| | | | | | | Ø32 | Ø25 |
| DBSPN004CB | 4 | 236 | 180 | 105 | 83 | 2 | 0 |
| DBSPN006CB | 6 | 271 | 215 | 140 | 83 | 2 | 2 |
| DBSPN008CB | 8 | 306 | 250 | 175 | 83 | 2 | 2 |
| DBSPN012CB | 12 | 376 | 320 | 245 | 83 | 2 | 4 |
| DBSPN016CB | 16 | 446 | 390 | 315 | 83 | 2 | 6 |
| DBSPN018CB | 18 | 481 | 425 | 350 | 83 | 2 | 6 |

Cable end box



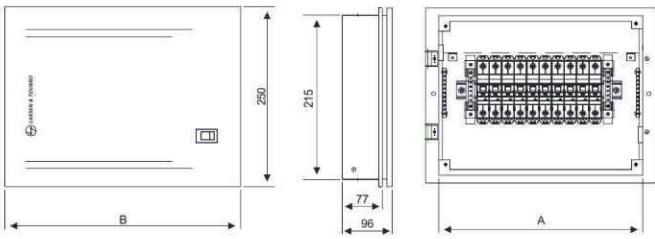
| CAT No. | No. of Ways | A | B | C | D | E | Top/Bottom Knock out | |
|-----------|-------------|-----|-----|-----|-----|-----|----------------------|-----|
| | | | | | | | Ø32 | Ø25 |
| DBVTMXXCB | - | 447 | 400 | 293 | 100 | 86 | 2 | 6 |
| DBVTXXXCB | - | 487 | 440 | 293 | 115 | 102 | 2 | 6 |

UNLESS OTHERWISE SPECIFIED DIMENSIONS ARE IN mm
TOLERANCE ON DIMENSIONS = ±2 mm

DBs suitable for Aluminium shuttering (Mivan) Construction

Dimension Details SPN DBs

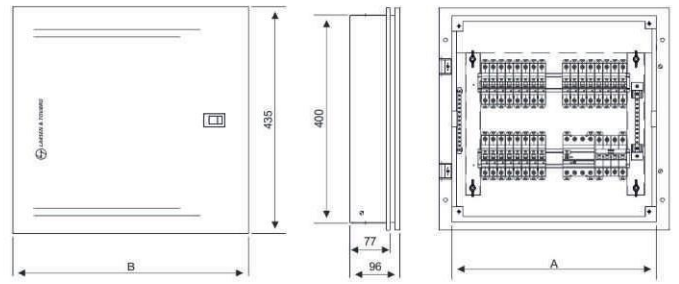
IP 43 metal door



| CAT No. | No. of Ways | A | B | Top/Bottom Knock out Ø 25 |
|---------|-------------|-----|-----|------------------------------|
| LTSD04M | 4 | 180 | 247 | 3 |
| LTSD06M | 6 | 220 | 287 | 4 |
| LTSD08M | 8 | 250 | 317 | 5 |
| LTSD12M | 12 | 320 | 387 | 7 |
| LTSD16M | 16 | 400 | 467 | 9 |

Dimension Details TPN DBs

IP 43 metal door

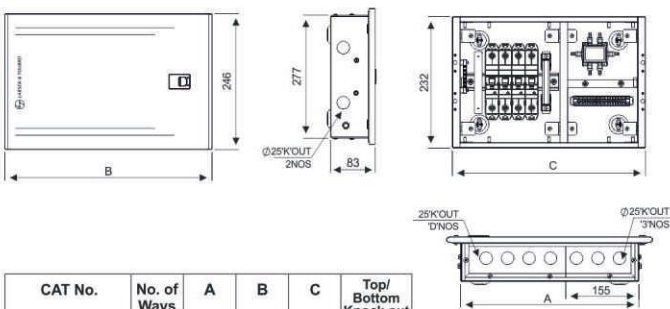


| CAT No. | No. of Ways | A | B | Top/Bottom Knock out Ø 25 |
|---------|-------------|-----|-----|------------------------------|
| LTTD04M | 4 | 360 | 427 | 8 |
| LTTD06M | 6 | 390 | 457 | 8 |
| LTTD08M | 8 | 430 | 497 | 9 |

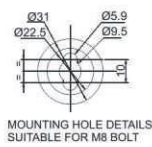
DBs with provision for TV/Telephone splitters

Dimension Details SPN DBs

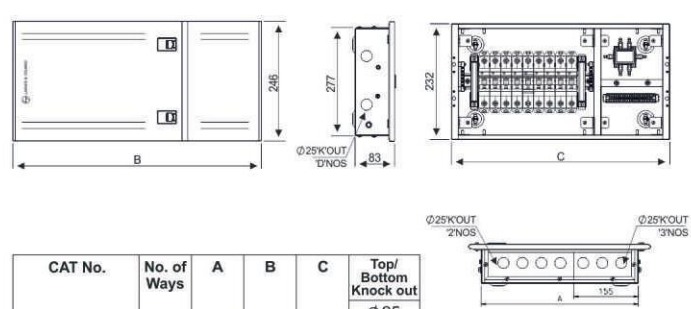
IP 43 metal door



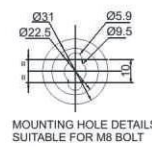
| CAT No. | No. of Ways | A | B | C | Top/Bottom Knock out Ø 25 |
|-------------|-------------|-----|-----|-----|------------------------------|
| DBSPN06DDTV | 6 | 365 | 433 | 407 | 4 |
| DBSPN08DDTV | 8 | 400 | 468 | 442 | 5 |
| DBSPN12DDTV | 12 | 470 | 538 | 512 | 7 |



IP 43 metal door

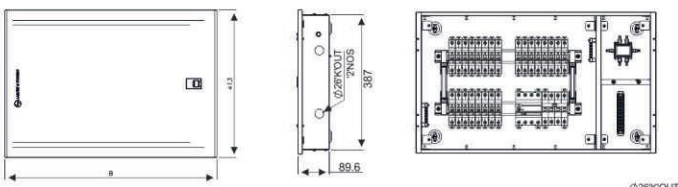


| CAT No. | No. of Ways | A | B | C | Top/Bottom Knock out Ø 25 |
|-------------|-------------|-----|-----|-----|------------------------------|
| DBSPN16DDTV | 16 | 540 | 608 | 582 | 8 |
| DBSPN18DDTV | 18 | 575 | 644 | 617 | 9 |

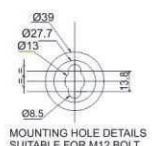


Dimension Details TPN DB

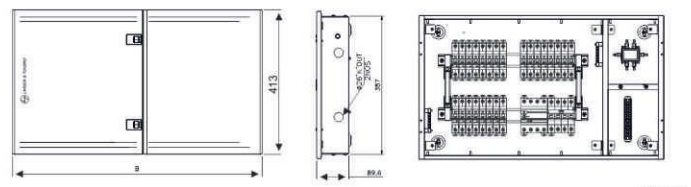
IP 43 metal door



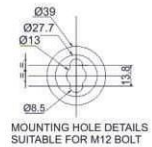
| CAT No. | No. of Ways | A | B | Top/Bottom Knock out Ø 25 Ø 32 |
|-------------|-------------|-----|-----|-----------------------------------|
| DBTPN04DDTV | 4 | 507 | 562 | 4 2 |
| DBTPN06DDTV | 6 | 548 | 603 | 6 2 |



IP 43 metal door



| CAT No. | No. of Ways | A | B | Top/Bottom Knock out Ø 25 Ø 32 |
|-------------|-------------|-----|-----|-----------------------------------|
| DBTPN08DDTV | 8 | 612 | 669 | 8 2 |



UNLESS OTHERWISE SPECIFIED DIMENSIONS ARE IN mm
TOLERANCE ON DIMENSIONS = ±2 mm

General Terms

All prices are on maximum retail price basis inclusive of all Duties, GST and any other Tax as applicable.

Prices are subject to revision without notice.

Warranty Policy

All the products listed in the price list carry a warranty, against manufacturing defects for a period of 18* months from the date of purchase.

Should the product prove to be defective due to faulty workmanship or otherwise, we will remedy the defect or replace the faulty parts or the whole product at our discretion, as soon as possible, free of cost.

The warranty is however subject to the provision of proper usage, efficient maintenance and does not cover defects arising out of fire, accident, inefficient maintenance, faulty operation and willful or accidental damage. It also does not cover damage to power electronic components like thyristors & IGBTs, which fail predominantly due to over-temperature & over-voltage. The user needs to take adequate precautions to eliminate these conditions. The manufacturer shall not be liable for any consequential loss, injury or damages attributable to defect or failure of its products.

Comprehensive Service Support

L&T has over five decades of experience in providing after sales service for low voltage distribution systems in every type of industry & commercial complex in India.

L&T offers the following services, partnering you in your maintenance of low voltage distribution products :

- Regular Maintenance
- Preventive Maintenance Programme
- On Call
- Annual Maintenance Contract
- Product Support for Managing Obsolescence - Retrofitting & Upgradation of your switchgear products.

* Proof of purchase to be retained to avail warranty

Electrical Standard Products (ESP) Offices:

HEAD OFFICE

L&T Business Park,
Tower 'B' / 3rd Floor
Saki Vihar Road, Powai
Mumbai 400 072
Tel: 022-67053229
Fax: 022-67051112
e-mail: cic@LNTEBG.com

BRANCH OFFICES

501, Sakar Complex I
Opp. Gandhigram Rly. Station
Ashram Road
Ahmedabad 380 009
Tel: 079-66304006-11
Fax: 079-66304025
e-mail: esp-ahm@LNTEBG.com

38, Cubbon Road, P. O. Box 5098
Bengaluru 560 001
Tel: 080-25020100 / 25020324
Fax: 080-25580525
e-mail: esp-blr@LNTEBG.com

131/1, Zone II, Maharana Pratap Nagar
Bhopal 462 011
Tel: 0755-3080511 / 05 / 08 / 13 / 17 / 19
Fax: 0755-3080502
e-mail: esp-bho@LNTEBG.com

Plot No. 559, Annapurna Complex
Lewis Road
Bhubaneswar 751 014
Tel: 0674-6451342 / 2436690 / 2436696
Fax: 0674-2537309
e-mail: esp-bsr@LNTEBG.com

Aspire Towers, 4th Floor
Plot No. 55, Phase-I
Industrial & Business Park
Chandigarh-160 002
Tel: 0172-4646840 / 41 / 42 / 46 / 53
Fax: 0172-4646802
Email: esp-chd@LNTEBG.com

L&T Construction Campus
TC-1 Building, II Floor
Mount-Poonamallee Road
Manapakkam
Chennai 600 089
Tel: 044-2270 6800
Fax: 044-22706940
e-mail: esp-maa1@LNTEBG.com

67, Appuswamy Road, Post Bag 7156
Opp. Nirmala College
Coimbatore 641 045
Tel: 0422-4588120 / 1 / 5
Fax: 0422-2588148
e-mail: esp-cbe@LNTEBG.com

1&2, Vijay Park, Main Chakrata road
Opp: Anandam, Ballupur Chowk
Dehradun 248001
Tel: 9582252411

Khairasol, Degaul Avenue
Durgapur 713 212
Tel: 0343-2540448 / 2540449 / 2540443
Fax: 0343-2540442
e-mail: esp-dgp@LNTEBG.com

5, Milanpur Road, Bamuni Maidan
Guwahati 781 021
Tel: +91 8876554417
e-mail: esp-ghy@LNTEBG.com

II Floor, Vasantha Chambers
5-10-173, Fateh Maidan Road
Hyderabad 500 004
Tel: 040-67015052
Fax: 040-23296468
e-mail: esp-hyd@LNTEBG.com

Monarch Building, 1st Floor
D-236 & 237, Amrapali Marg
Vaishali Nagar
Jaipur 302 021
Tel: 0141-4385914 to 18
Fax: 0141-4385925
e-mail: esp-jai@LNTEBG.com

Akashdeep Plaza, 2nd Floor
P. O. Golmuri
Jamshedpur 831 003
Jharkhand
Tel: 0657-2312205 / 38
Fax: 0657-2341250
e-mail: esp-jam@LNTEBG.com

Skybright Bldg; M. G. Road
Ravipuram Junction, Ernakulam
Kochi 682 016
Tel: 0484-4409420 / 4 / 5 / 7
Fax: 0484-4409426
e-mail: esp-cok@LNTEBG.com

3-B, Shakespeare Sarani
Kolkata 700 071
Tel: 033-42005982
Fax: 033-22821025 / 7587
e-mail: esp-ccu@LNTEBG.com

A28, Indira Nagar, Faizabad Road
Lucknow 226 016
Tel: 0522-4929905 / 04
Fax: 0522-2311671
e-mail: esp-lko@LNTEBG.com

No: 73, Karpaga Nagar, 8th Street
K. Pudur
Madurai 625 007
Tel: 0452-2567405 / 2561068 / 2561657
Fax: 0452-2567552
e-mail: esp-mdu@LNTEBG.com

L&T Business Park, Tower 'B' / 3rd Floor
Saki Vihar Road, Powai
Mumbai 400 072
Tel: 022-67052874 / 2737 / 1156
Fax: 022-67051112
e-mail: esp-bom@LNTEBG.com

Unnati Building, 2nd Floor
Automation Campus
A-600, TTC Industrial area
Shil-Mahape road, Mahape
Navi Mumbai - 400710
Tel: 8102440613
e-mail: esp-patna@LNTEBG.com

12, Shivaji Nagar
North Ambajhari Road
Nagpur 440 010
Tel: 0712-2260012 / 6606421
Fax: 2260030 / 6606434
e-mail: esp-nag@LNTEBG.com

32, Shivaji Marg
P. O. Box 6223
New Delhi 110 015
Tel: 011-41419514 / 5 / 6
Fax: 011-41419600
e-mail: esp-del@LNTEBG.com

Grand Chandra, 2nd Floor
Fraser Road
Opposite Doordarshan Kendra
Patna 800001
Tel: 8102440613
e-mail: esp-patna@LNTEBG.com

L&T House
P. O. Box 119
191/1, Dhole Patil Road
Pune 411 001
Tel: 020-48544395 / 48544279
e-mail: esp.pnq@LNTEBG.com

Crystal Tower,
4th Floor, G. E. Road
Telibandha
Raipur - 492 006
Tel: 0771-4283214
e-mail: esp-raipur@LNTEBG.com

3rd Floor
Vishwakarma Chambers
Majura Gate, Ring Road
Surat 395 002
Tel: 0261-2473726
Fax: 0261-2477078
e-mail: esp-sur@LNTEBG.com

Radhadaya Complex
Old Padra Road
Near Charotar Society
Vadodara 390 007
Tel: 0265-6613610 / 1 / 2
Fax: 0265-2336184
e-mail: esp-bar@LNTEBG.com

Door No. 49-38-14/3/2, 1st floor,
NGGO's Colony, Akkayyapalem,
Visakhapatnam - 530 016
Tel: 0891-2791126 / 2711125
Fax: 0891-2791100
e-mail: esp-viz@LNTEBG.com

Product improvement is a continuous process. For the latest information and special applications, please contact any of our offices listed here.



A brand of Larsen & Toubro Limited

L&T Electrical & Automation, Electrical Standard Products
Powai Campus, Mumbai 400 072

Customer Interaction Center (CIC)
BSNL / MTNL (toll-free): 1800 233 5858 Reliance (toll-free): 1800 200 5858
Tel: 022 6774 5858 Email: cic@Lntebg.com Web: www.Lntebg.com

Regd. Office: L&T Electrical & Automation, L&T House, N. M. Marg,
Ballard Estate, Mumbai - 400 001, INDIA. CIN: L99999MH1946PLC004768